

Product datasheet for **TP303081M**

fast skeletal Myosin (MYLPF) (NM_013292) Human Recombinant Protein

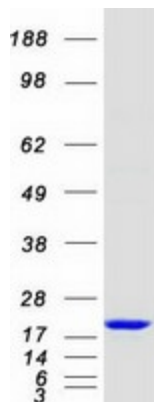
Product data:

Product Type:	Recombinant Proteins
Description:	Recombinant protein of human myosin light chain, phosphorylatable, fast skeletal muscle (MYLPF), 100 µg
Species:	Human
Expression Host:	HEK293T
Expression cDNA Clone or AA Sequence:	>RC203081 protein sequence Red =Cloning site Green =Tags(s)
	MAPKRAKRRTVEGGSSSVFSMFDQTQIQEFKEAFTVIDQNRDGIIDKEDLRDTFAAMGRLNVKNEELDAM MKEASGPINFVFLTMFGEKLGADPEDVITGAFKVLDPPEGKGTIKKKFLEELLTQCDFRSQEEIKNMW AAFPPDVGGNVDYKNICYVITHGDAKDQE
	TRTRPLEQKLISEEDLAANDILDYKDDDDKV
Tag:	C-Myc/DDK
Predicted MW:	18.8 kDa
Concentration:	>0.05 µg/µL as determined by microplate BCA method
Purity:	> 80% as determined by SDS-PAGE and Coomassie blue staining
Buffer:	25 mM Tris-HCl, 100 mM glycine, pH 7.3, 10% glycerol
Preparation:	Recombinant protein was captured through anti-DDK affinity column followed by conventional chromatography steps.
Note:	For testing in cell culture applications, please filter before use. Note that you may experience some loss of protein during the filtration process.
Storage:	Store at -80°C.
Stability:	Stable for 12 months from the date of receipt of the product under proper storage and handling conditions. Avoid repeated freeze-thaw cycles.
RefSeq:	NP_037424
Locus ID:	29895
UniProt ID:	Q96A32 , A0A024QZG6



[View online »](#)

RefSeq Size:	683
Cytogenetics:	16p11.2
RefSeq ORF:	507
Synonyms:	HUMMLC2B; MLC2B; MRLC2; MYL11
Protein Pathways:	Focal adhesion, Leukocyte transendothelial migration, Regulation of actin cytoskeleton, Tight junction

Product images:

Coomassie blue staining of purified MYLPF protein (Cat# [TP303081]). The protein was produced from HEK293T cells transfected with MYLPF cDNA clone (Cat# [RC203081]) using MegaTran 2.0 (Cat# [TT210002]).