

Product datasheet for **TP303078**

Spindly (SPDL1) (NM_017785) Human Recombinant Protein

Product data:

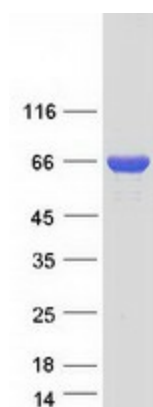
Product Type:	Recombinant Proteins
Description:	Recombinant protein of human coiled-coil domain containing 99 (CCDC99), 20 µg
Species:	Human
Expression Host:	HEK293T
Expression cDNA Clone or AA Sequence:	>RC203078 protein sequence Red =Cloning site Green =Tags(s)
	<p>MEADIITNLRCLKEAEEERLKAAQYGLQLVESQNELQNQLDKCRNEMMTMTESYEQEKYTLQREVELKS RMLESLSCECEAIKQQQKMHLKLEEQLSRSHGQEVNELKTKIEKLKVELDEARLSEKQLKHQVDHQLKEL LSCKSEELRVMSERVQESMSSEMLALQIELTEMESMKTTLKEEVNELQYRQEQLLELITNLMRQVDRLKE EKEEREKEAVSYNALEKARVANQDLQVQLDQALQQALDPNSKGNSLFAEVEDRRAAMERQLISMKVKY Q SLKKQNVFNREQMQRMKLQIATLLQMKGSTFEFEQERLLAMLEQKNGEIKHLLGEIRNLEKFKNLYDS M ESKPSVDSGTLEDNTYYTDLLQMKLDNLNKEIESTKGELSIQRMKALFESQRALDIERKLFANERCLQLS ESENMKLRAKLDELKLYEPEETVEVPVLKKRREVLVPDITTAKDACVNNNSALGGEVYRLPPQKEETQSC PNSLEDNNLQLEKSVSIHTPVVSLSPHKNLVPDMQLKKEKKCVKLIGVPADAEALSERSGNTPNSPRLAA ESKLQTEVKEGKETSSKLEKETCKKSHPIVYVSSKSTPETQCPQQ</p> <p>TRTRPLEQKLISEEDLAANDILDYKDDDDKV</p>
Tag:	C-Myc/DDK
Predicted MW:	70 kDa
Concentration:	>0.05 µg/µL as determined by microplate BCA method
Purity:	> 80% as determined by SDS-PAGE and Coomassie blue staining
Buffer:	25 mM Tris-HCl, 100 mM glycine, pH 7.3, 10% glycerol
Preparation:	Recombinant protein was captured through anti-DDK affinity column followed by conventional chromatography steps.
Note:	For testing in cell culture applications, please filter before use. Note that you may experience some loss of protein during the filtration process.
Storage:	Store at -80°C.



[View online »](#)

Stability:	Stable for 12 months from the date of receipt of the product under proper storage and handling conditions. Avoid repeated freeze-thaw cycles.
RefSeq:	<u>NP_060255</u>
Locus ID:	54908
UniProt ID:	<u>Q96EA4</u>
RefSeq Size:	2683
Cytogenetics:	5q35.1
RefSeq ORF:	1815
Synonyms:	CCDC99
Summary:	This gene encodes a coiled-coil domain-containing protein that functions in mitotic spindle formation and chromosome segregation. The encoded protein plays a role in coordinating microtubule attachment by promoting recruitment of dynein proteins, and in mitotic checkpoint signaling. [provided by RefSeq, Jul 2016]

Product images:



Coomassie blue staining of purified SPDL1 protein (Cat# TP303078). The protein was produced from HEK293T cells transfected with SPDL1 cDNA clone (Cat# [RC203078]) using MegaTran 2.0 (Cat# [TT210002]).