

Product datasheet for **TP303069L**

PEF1 (NM_012392) Human Recombinant Protein

Product data:

Product Type: Recombinant Proteins

Description: Recombinant protein of human penta-EF-hand domain containing 1 (PEF1), 1 mg

Species: Human

Expression Host: HEK293T

Expression cDNA >RC203069 protein sequence

Clone or AA **Red**=Cloning site **Green**=Tags(s)

Sequence:

MASYPYRQGCPGAAGQAPGAPPGSYYPGPPNSGGQYGSGLPPGGGYGGPAPGGPYGPPAGGGPYGHPNPG
MFPSGTPGGPYGGAAPGGPYGQPPSSYGAQQPGLYGQGGAPPNVDPEAYSWFQSVSDHSGYISMKELK
QALVNCNWSSFNDETCLMMINMFDKTKSGRIDVYGFSALWKFIQQWKNLFFQYDRDRSGSISYTELQQAL
SQMGYNLSPQFTQLLVSRYCPRSANPAMQLDRFIQVCTQLQVLTEAFREKDTAVQGNIRLSFEDFVTMTA
SRML

TRTRPLEQKLISEEDLAANDILDYKDDDDKV

Tag: C-Myc/DDK

Predicted MW: 30.2 kDa

Concentration: >0.05 µg/µL as determined by microplate BCA method

Purity: > 80% as determined by SDS-PAGE and Coomassie blue staining

Buffer: 25 mM Tris-HCl, 100 mM glycine, pH 7.3, 10% glycerol

Preparation: Recombinant protein was captured through anti-DDK affinity column followed by conventional chromatography steps.

Note: For testing in cell culture applications, please filter before use. Note that you may experience some loss of protein during the filtration process.

Storage: Store at -80°C.

Stability: Stable for 12 months from the date of receipt of the product under proper storage and handling conditions. Avoid repeated freeze-thaw cycles.

RefSeq: [NP_036524](#)

Locus ID: 553115



[View online »](#)

UniProt ID: [Q9UBV8](#), [A0A384MQX5](#)

RefSeq Size: 1997

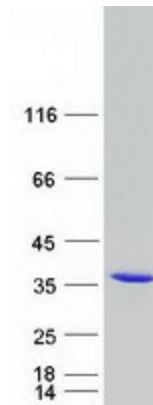
Cytogenetics: 1p35.2

RefSeq ORF: 852

Synonyms: ABP32; PEF1A

Summary: This gene encodes a calcium-binding protein belonging to the penta-EF-hand protein family. The encoded protein has been shown to form a heterodimer with the programmed cell death 6 gene product and may modulate its function in Ca²⁺ signaling. Alternative splicing results in multiple transcript variants and a pseudogene has been identified on chromosome 1.[provided by RefSeq, May 2010]

Product images:



Coomassie blue staining of purified PEF1 protein (Cat# [TP303069]). The protein was produced from HEK293T cells transfected with PEF1 cDNA clone (Cat# [RC203069]) using MegaTran 2.0 (Cat# [TT210002]).