

Product datasheet for TP303057M

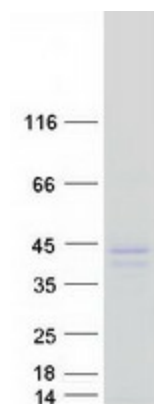
RWDD2B (NM_016940) Human Recombinant Protein

Product data:

Product Type:	Recombinant Proteins
Description:	Recombinant protein of human RWD domain containing 2B (RWDD2B), 100 µg
Species:	Human
Expression Host:	HEK293T
Expression cDNA Clone or AA Sequence:	>RC203057 protein sequence Red =Cloning site Green =Tags(s) MKIELSMQPWNPGYSSEGATAQETYTCPKMIEMEQAEQLAELDLLASMFPGENELIVNDQLAVAELKDC IEKKTMEGRSSKVYFTINMNLDVSDEKMAMFSLACILPFKYPAVLPEITVRSVLLSRSQQTQLNTDLTAF LQKHCHGDVCILNATEWVREHASGYVSRDTSSSPTTGSTVQSVDLIFTRLWIYSHHIYNKCKRKNILEWA KELSLSGFSMPGKPGVVCVEGPQSACEEFWSRLRKLNWKRILIRHREDIPFDGTNDETERQRKFSIFEK VFSVNGARGNHMDFGQLYQFLNTKGCGDVFQMFFGVEGQ TR TRPLEQKLISEEDLAANDILDYKDDDDKV
Tag:	C-Myc/DDK
Predicted MW:	36.2 kDa
Concentration:	>0.05 µg/µL as determined by microplate BCA method
Purity:	> 80% as determined by SDS-PAGE and Coomassie blue staining
Buffer:	25 mM Tris-HCl, 100 mM glycine, pH 7.3, 10% glycerol
Preparation:	Recombinant protein was captured through anti-DDK affinity column followed by conventional chromatography steps.
Note:	For testing in cell culture applications, please filter before use. Note that you may experience some loss of protein during the filtration process.
Storage:	Store at -80°C.
Stability:	Stable for 12 months from the date of receipt of the product under proper storage and handling conditions. Avoid repeated freeze-thaw cycles.
RefSeq:	<u>NP_058636</u>
Locus ID:	10069


[View online »](#)

UniProt ID: P57060
 RefSeq Size: 1712
 Cytogenetics: 21q21.3
 RefSeq ORF: 957
 Synonyms: C21orf6; GL011

Product images:


Coomassie blue staining of purified RWDD2B protein (Cat# [TP303057]). The protein was produced from HEK293T cells transfected with RWDD2B cDNA clone (Cat# [RC203057]) using MegaTran 2.0 (Cat# [TT210002]).