

## Product datasheet for TP303053M

### SULT1B1 (NM\_014465) Human Recombinant Protein

#### Product data:

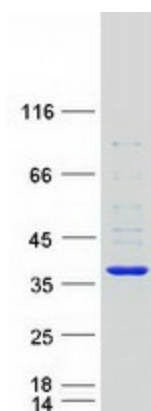
Product Type:	Recombinant Proteins
Description:	Recombinant protein of human sulfotransferase family, cytosolic, 1B, member 1 (SULT1B1), 100 µg
Species:	Human
Expression Host:	HEK293T
Expression cDNA Clone or AA Sequence:	>RC203053 protein sequence <b>Red</b> =Cloning site <b>Green</b> =Tags(s)
	<p>MLSPKDILRKDLKLVHGYPMTCASFASNWEKIEQFHSRPDDIVIATYPKSGTTWVSEIIDMILNDGDIEKC KRGFITEKVPMLEMTLPGLRTSGIEQLEKNPSPRIVKTHLPTDLLPKSFWENNCKMIYLARNKDVSVSY YHFDLMNNLQPFPGTWEEYLEKFLTGKVAYGSWFTHVKNWWWKRKEEHPIFLYEDMKENPKEEIKIIR FLEKNLNDEILDRIIHHTSFVEMKDNPLVNYTHLPTTVMDHSPFMRKGTAGDWKNYFTVAQNEKFDIAI YETEMSKTALQFRTEI</p> <p><b>TRTRPLEQKLISEEDLAANDILDYKDDDDKV</b></p>
Tag:	C-Myc/DDK
Predicted MW:	34.7 kDa
Concentration:	>0.05 µg/µL as determined by microplate BCA method
Purity:	> 80% as determined by SDS-PAGE and Coomassie blue staining
Buffer:	25 mM Tris-HCl, 100 mM glycine, pH 7.3, 10% glycerol
Preparation:	Recombinant protein was captured through anti-DDK affinity column followed by conventional chromatography steps.
Note:	For testing in cell culture applications, please filter before use. Note that you may experience some loss of protein during the filtration process.
Storage:	Store at -80°C.
Stability:	Stable for 12 months from the date of receipt of the product under proper storage and handling conditions. Avoid repeated freeze-thaw cycles.
RefSeq:	<a href="#">NP_055280</a>
Locus ID:	27284



[View online »](#)

UniProt ID:	<a href="#">O43704</a>
RefSeq Size:	1320
Cytogenetics:	4q13.3
RefSeq ORF:	888
Synonyms:	ST1B1; ST1B2; SULT1B2
Summary:	Sulfotransferase enzymes catalyze the sulfate conjugation of many hormones, neurotransmitters, drugs, and xenobiotic compounds. These cytosolic enzymes are different in their tissue distributions and substrate specificities. The gene structure (number and length of exons) is similar among family members. However, the total genomic length of this gene is greater than that of other SULT1 genes. [provided by RefSeq, Jul 2008]

### Product images:



Coomassie blue staining of purified SULT1B1 protein (Cat# [TP303053]). The protein was produced from HEK293T cells transfected with SULT1B1 cDNA clone (Cat# [RC203053]) using MegaTran 2.0 (Cat# [TT210002]).