

Product datasheet for TP303050L

COMMD9 (NM_014186) Human Recombinant Protein

Product data:

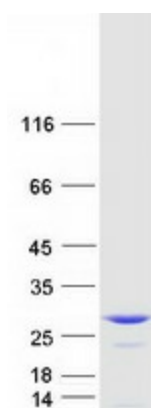
Product Type:	Recombinant Proteins
Description:	Recombinant protein of human COMM domain containing 9 (COMMD9), transcript variant 1, 1 mg
Species:	Human
Expression Host:	HEK293T
Expression cDNA Clone or AA Sequence:	>RC203050 protein sequence Red =Cloning site Green =Tags(s)
	MAALTAEHFAALQSLLKASSKDVWRQLCQESFSSALGLKLLDVTCSLSVTQEEAEELLQALHRLTRL VAFRDLSSAEAILALFPENFHQNLKNLLTKIILEHVSTWRTEAQANQISLPRLVDLDWRVDIKTSSDSIS RMAVPTCLLQMKIQEDPSLCGDKPSISAVTVELSKETLDTMLDGLGRIRDQLSAVASK
	TRTRPLEQKLISEEDLAANDILDYKDDDDKV
Tag:	C-Myc/DDK
Predicted MW:	21.6 kDa
Concentration:	>0.05 µg/µL as determined by microplate BCA method
Purity:	> 80% as determined by SDS-PAGE and Coomassie blue staining
Buffer:	25 mM Tris-HCl, 100 mM glycine, pH 7.3, 10% glycerol
Preparation:	Recombinant protein was captured through anti-DDK affinity column followed by conventional chromatography steps.
Note:	For testing in cell culture applications, please filter before use. Note that you may experience some loss of protein during the filtration process.
Storage:	Store at -80°C.
Stability:	Stable for 12 months from the date of receipt of the product under proper storage and handling conditions. Avoid repeated freeze-thaw cycles.
RefSeq:	<u>NP_054905</u>
Locus ID:	29099
UniProt ID:	<u>Q9P000</u> , <u>Q53FR9</u>



[View online »](#)

RefSeq Size:	3006
Cytogenetics:	11p13
RefSeq ORF:	594
Synonyms:	C11orf55; HSPC166; LINC00610
Summary:	May modulate activity of cullin-RING E3 ubiquitin ligase (CRL) complexes (PubMed:21778237). May down-regulate activation of NF-kappa-B (PubMed:15799966). Modulates Na(+) transport in epithelial cells by regulation of apical cell surface expression of amiloride-sensitive sodium channel (ENaC) subunits (PubMed:23637203).[UniProtKB/Swiss-Prot Function]

Product images:



Coomassie blue staining of purified COMMD9 protein (Cat# [TP303050]). The protein was produced from HEK293T cells transfected with COMMD9 cDNA clone (Cat# [RC203050]) using MegaTran 2.0 (Cat# [TT210002]).