

Product datasheet for **TP303046**

DERL2 (NM_016041) Human Recombinant Protein

Product data:

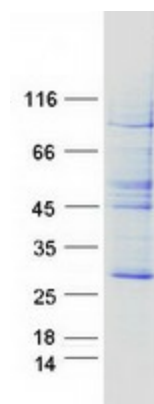
Product Type:	Recombinant Proteins
Description:	Recombinant protein of human Der1-like domain family, member 2 (DERL2), 20 µg
Species:	Human
Expression Host:	HEK293T
Expression cDNA Clone or AA Sequence:	>RC203046 protein sequence Red =Cloning site Green =Tags(s)
	MAYQSLRLEYLQIPPVSRAYTTACVLTTAAVQLELITPFQLYFNPELIFKHFIWRLITNFFGPGVGFN FLFNMIPLYRYCRMLEEGSFRGRTADFVFMFLFGGFLMTLFGFLVSLVFLGQAFTIMLVYVWSRRNPYVR MNFFGLLNFAQPLPWVLMGFSLLLGNLSIIVDLLGIAVGHIYFFLEDVFPNQPGGIRILKTPSILKAIFD TPDEDPNYNPLPEERPGGFAWGEGQRLGG
	TR TRPLE QKLISEEDLAANDILDYKDDDDKV
Tag:	C-Myc/DDK
Predicted MW:	27.4 kDa
Concentration:	>0.05 µg/µL as determined by microplate BCA method
Purity:	> 80% as determined by SDS-PAGE and Coomassie blue staining
Buffer:	25 mM Tris-HCl, 100 mM glycine, pH 7.3, 10% glycerol
Preparation:	Recombinant protein was captured through anti-DDK affinity column followed by conventional chromatography steps.
Note:	For testing in cell culture applications, please filter before use. Note that you may experience some loss of protein during the filtration process.
Storage:	Store at -80°C.
Stability:	Stable for 12 months from the date of receipt of the product under proper storage and handling conditions. Avoid repeated freeze-thaw cycles.
RefSeq:	<u>NP_057125</u>
Locus ID:	51009
UniProt ID:	<u>Q9GZP9</u>



[View online »](#)

RefSeq Size:	1156
Cytogenetics:	17p13.2
RefSeq ORF:	717
Synonyms:	CGI-101; derlin-2; DERtrin-2; F-LAN-1; F-LANa; FLANa
Summary:	Proteins that are unfolded or misfolded in the endoplasmic reticulum (ER) must be refolded or degraded to maintain the homeostasis of the ER. DERL2 is involved in the degradation of misfolded glycoproteins in the ER (Oda et al., 2006 [PubMed 16449189]).[supplied by OMIM, Mar 2008]
Protein Families:	Transmembrane

Product images:



Coomassie blue staining of purified DERL2 protein (Cat# TP303046). The protein was produced from HEK293T cells transfected with DERL2 cDNA clone (Cat# [RC203046]) using MegaTran 2.0 (Cat# [TT210002]).