

Product datasheet for **TP303045L**

CCDC53 (WASHC3) (NM_016053) Human Recombinant Protein

Product data:

Product Type:	Recombinant Proteins
Description:	Recombinant protein of human coiled-coil domain containing 53 (CCDC53), 1 mg
Species:	Human
Expression Host:	HEK293T
Expression cDNA Clone or AA Sequence:	>RC203045 protein sequence Red =Cloning site Green =Tags(s)
	MDEDGLPLMGSGIDLTKVPAIQKRTVAFLNQFVHTVQFLNRFSTVCEEKLDLSLRIQIETTLNILD AKLSSIPGLDDVTVEVSPLNVTSVTNGAHPEATSEQPQQSSTQDSGLQESEVSAENILTVAKDPYARYL KMQVGVPMVAIRNKMISEGLDPDLLERPDAPVPDGESEKTVEESSDSESSFSD
	TRTRPLEQKLISEEDLAANDILDYKDDDDKV
Tag:	C-Myc/DDK
Predicted MW:	21 kDa
Concentration:	>0.05 µg/µL as determined by microplate BCA method
Purity:	> 80% as determined by SDS-PAGE and Coomassie blue staining
Buffer:	25 mM Tris-HCl, 100 mM glycine, pH 7.3, 10% glycerol
Preparation:	Recombinant protein was captured through anti-DDK affinity column followed by conventional chromatography steps.
Note:	For testing in cell culture applications, please filter before use. Note that you may experience some loss of protein during the filtration process.
Storage:	Store at -80°C.
Stability:	Stable for 12 months from the date of receipt of the product under proper storage and handling conditions. Avoid repeated freeze-thaw cycles.
RefSeq:	NP_057137
Locus ID:	51019
UniProt ID:	Q9Y3C0
RefSeq Size:	1015



[View online »](#)

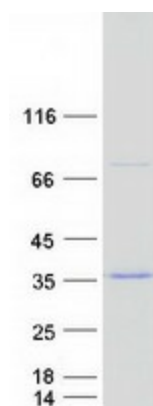
Cytogenetics: 12q23.2

RefSeq ORF: 582

Synonyms: CCDC53; CGI-116

Summary: Acts at least in part as component of the WASH core complex whose assembly at the surface of endosomes seems to inhibit WASH nucleation-promoting factor (NPF) activity in recruiting and activating the Arp2/3 complex to induce actin polymerization, and which is involved in regulation of the fission of tubules that serve as transport intermediates during endosome sorting (PubMed:19922875, PubMed:20498093).[UniProtKB/Swiss-Prot Function]

Product images:



Coomassie blue staining of purified WASHC3 protein (Cat# [TP303045]). The protein was produced from HEK293T cells transfected with WASHC3 cDNA clone (Cat# [RC203045]) using MegaTran 2.0 (Cat# [TT210002]).