

## Product datasheet for TP303045

### CCDC53 (WASHC3) (NM\_016053) Human Recombinant Protein

#### Product data:

**Product Type:** Recombinant Proteins

**Description:** Recombinant protein of human coiled-coil domain containing 53 (CCDC53), 20 µg

**Species:** Human

**Expression Host:** HEK293T

**Expression cDNA Clone or AA Sequence:** >RC203045 protein sequence  
Red=Cloning site Green=Tags(s)

MDEDGLPLMGSGIDLTkVPAIQKRTVAFLNQFVVHTVQFLNRFSTVCEEKLADLSLRQQIETTLNILD  
AKLSSIPGLDDVTVEVSPLNVTSVTNGAHPEATSEQPQSQSSTQDSGLQESEVSAENILTVAKDPYARYL  
KMQVQGVPMVMAIRNKMISEGLDPDLLERPDAPVPDGESEKTVEESSDSESSFS

TRTRPLEQKLISEEDLAANDILDYKDDDDKV

**Tag:** C-Myc/DDK

**Predicted MW:** 21 kDa

**Concentration:** >0.05 µg/µL as determined by microplate BCA method

**Purity:** > 80% as determined by SDS-PAGE and Coomassie blue staining

**Buffer:** 25 mM Tris-HCl, 100 mM glycine, pH 7.3, 10% glycerol

**Preparation:** Recombinant protein was captured through anti-DDK affinity column followed by conventional chromatography steps.

**Note:** For testing in cell culture applications, please filter before use. Note that you may experience some loss of protein during the filtration process.

**Storage:** Store at -80°C.

**Stability:** Stable for 12 months from the date of receipt of the product under proper storage and handling conditions. Avoid repeated freeze-thaw cycles.

**RefSeq:** [NP\\_057137](#)

**Locus ID:** 51019

**UniProt ID:** [Q9Y3C0](#)

**RefSeq Size:** 1015



[View online »](#)

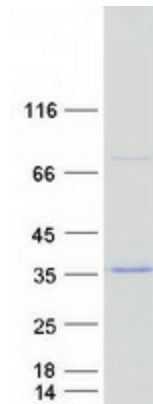
Cytogenetics: 12q23.2

RefSeq ORF: 582

Synonyms: CCDC53; CGI-116

**Summary:** Acts at least in part as component of the WASH core complex whose assembly at the surface of endosomes seems to inhibit WASH nucleation-promoting factor (NPF) activity in recruiting and activating the Arp2/3 complex to induce actin polymerization, and which is involved in regulation of the fission of tubules that serve as transport intermediates during endosome sorting (PubMed:19922875, PubMed:20498093).[UniProtKB/Swiss-Prot Function]

### Product images:



Coomassie blue staining of purified WASHC3 protein (Cat# TP303045). The protein was produced from HEK293T cells transfected with WASHC3 cDNA clone (Cat# [RC203045]) using MegaTran 2.0 (Cat# [TT210002]).