

Product datasheet for **TP303031M**

Fascin (FSCN1) (NM_003088) Human Recombinant Protein

Product data:

Product Type:	Recombinant Proteins
Description:	Recombinant protein of human fascin homolog 1, actin-bundling protein (Strongylocentrotus purpuratus) (FSCN1), 100 µg
Species:	Human
Expression Host:	HEK293T
Expression cDNA Clone or AA Sequence:	>RC203031 protein sequence Red =Cloning site Green =Tags(s)

MTANGTAEAVQIQFGLINCGNKYLTAFAFGFKVNASASSLKKKQIWTLEQPPDEAGSAAVCLRSHLGRYL
AADKDGNTCEREVPGPDCRFLIVAHDDGRWSLQSEAHRRYFGGTEDRLSCFAQTVSPA EKWSVHIAMHP
QVNIYSVTRKRYAHL SARPAD EIAVDRDVPWGVDSLITLAFQDQRYSVQTADHRFLRH DGR LVARPEPAT
GYTL EFRSGKVAFRDCEGRYLAPSGPSGTLKAGKATKVGKDELFALEQSCAQVVLQAANERNVSTRQGM D
LSANQDEETDQETFQLEIDRDTKKCAFRTHTGKYWTLTATGGVQSTASSKNASCYFDIEWRDRRITLRAS
NGKFVTSKKNQGLAASVETAGDSELFLMKLINRPIIVFRGEHGFICRKTGTLDANRSSYDVFQLEFND
GAYNIKDSTGKYWTVGSDSVTSSGDTPVDFEFCDYNKVAIKVGGRYLKGDHAGVLKASAETVDPASL
WEY

SGPTRTRPLEQKLISEEDLAANDILDYKDDDDKV

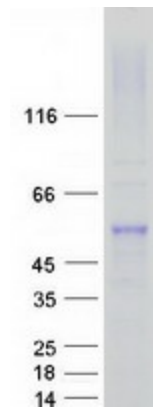
Tag:	C-Myc/DDK
Predicted MW:	54.3 kDa
Concentration:	>0.05 µg/µL as determined by microplate BCA method
Purity:	> 80% as determined by SDS-PAGE and Coomassie blue staining
Buffer:	25 mM Tris-HCl, 100 mM glycine, pH 7.3, 10% glycerol
Preparation:	Recombinant protein was captured through anti-DDK affinity column followed by conventional chromatography steps.
Note:	For testing in cell culture applications, please filter before use. Note that you may experience some loss of protein during the filtration process.
Storage:	Store at -80°C.



[View online »](#)

Stability:	Stable for 12 months from the date of receipt of the product under proper storage and handling conditions. Avoid repeated freeze-thaw cycles.
RefSeq:	NP_003079
Locus ID:	6624
UniProt ID:	Q16658 , A0A384MEG1 , B3KTA3
RefSeq Size:	2812
Cytogenetics:	7p22.1
RefSeq ORF:	1479
Synonyms:	FAN1; HSN; p55; SNL
Summary:	This gene encodes a member of the fascin family of actin-binding proteins. Fascin proteins organize F-actin into parallel bundles, and are required for the formation of actin-based cellular protrusions. The encoded protein plays a critical role in cell migration, motility, adhesion and cellular interactions. Expression of this gene is known to be regulated by several microRNAs, and overexpression of this gene may play a role in the metastasis of multiple types of cancer by increasing cell motility. Expression of this gene is also a marker for Reed-Sternberg cells in Hodgkin's lymphoma. A pseudogene of this gene is located on the long arm of chromosome 15. [provided by RefSeq, Sep 2011]

Product images:



Coomassie blue staining of purified FSCN1 protein (Cat# [TP303031]). The protein was produced from HEK293T cells transfected with FSCN1 cDNA clone (Cat# [RC203031]) using MegaTran 2.0 (Cat# [TT210002]).