

Product datasheet for TP303023M

CORO1B (NM_020441) Human Recombinant Protein

Product data:

| | |
|---------------------------------------|--|
| Product Type: | Recombinant Proteins |
| Description: | Recombinant protein of human coronin, actin binding protein, 1B (CORO1B), transcript variant 1, 100 µg |
| Species: | Human |
| Expression Host: | HEK293T |
| Expression cDNA Clone or AA Sequence: | >RC203023 protein sequence Red=Cloning site Green=Tags(s) |

MSFRKVRQSKFRHVFQGPVKNDQCYEDIRVSRVTWDSTFCAVNPKFLAVIVEASGGGAFVLVPLSKTGR
IDKAYPTVCGHTGPVLDIDWCPHNDEVIASGSEDCVMVWQIPENGLTSPLTEPVVLEGHKRVGIIAW
HPTARNVLLSAGCDNVVLIWNVGTAEELYRLDSLHPDLIYNVSWNHNGSLFCSACKDKSVRIIDPRRGLT
VAEREKAHEGARPMRAIFLADGKVFTTGFSRMSERQLALWDPENLEPMALQELDSSNGALLPFYDPDTS
VVYVCGKGDSSIRYFEITEPPYIHFNTFTSKEPQRGMGSMKRGLEVSKCEIARFYKLHERKCEPIVM
TVPRKSDLFQDDLYPDPTAGPEAALEAEWVSGRDADPILISLREAYVPSKQRDLKISRRNVLSDSRPAMA
PGSSHLGAPASTTTAADATPSGSLARAGEAGKLEEVMQELRALRALVKEQGDRICRLEEQLGRMENGDA

TRTRPLEQKLISEEDLAANDILDYKDDDDKV

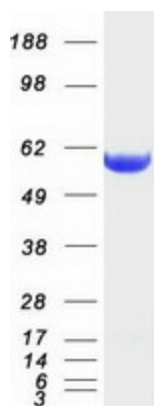
| | |
|----------------|--|
| Tag: | C-Myc/DDK |
| Predicted MW: | 54.1 kDa |
| Concentration: | >0.05 µg/µL as determined by microplate BCA method |
| Purity: | > 80% as determined by SDS-PAGE and Coomassie blue staining |
| Buffer: | 25 mM Tris-HCl, 100 mM glycine, pH 7.3, 10% glycerol |
| Preparation: | Recombinant protein was captured through anti-DDK affinity column followed by conventional chromatography steps. |
| Note: | For testing in cell culture applications, please filter before use. Note that you may experience some loss of protein during the filtration process. |
| Storage: | Store at -80°C. |
| Stability: | Stable for 12 months from the date of receipt of the product under proper storage and handling conditions. Avoid repeated freeze-thaw cycles. |



[View online »](#)

| | |
|---------------|--|
| RefSeq: | NP_065174 |
| Locus ID: | 57175 |
| UniProt ID: | Q9BR76 , A0A024R5K1 |
| RefSeq Size: | 1927 |
| Cytogenetics: | 11q13.2 |
| RefSeq ORF: | 1467 |
| Synonyms: | CORONIN-2 |
| Summary: | Members of the coronin family, such as CORO1B, are WD repeat-containing actin-binding proteins that regulate cell motility (Cai et al., 2005 [PubMed 16027158]).[supplied by OMIM, Mar 2008] |

Product images:



Coomassie blue staining of purified CORO1B protein (Cat# [TP303023]). The protein was produced from HEK293T cells transfected with CORO1B cDNA clone (Cat# [RC203023]) using MegaTran 2.0 (Cat# [TT210002]).