

## Product datasheet for **TP303022M**

### Methionyl Aminopeptidase 1 (METAP1) (NM\_015143) Human Recombinant Protein

#### Product data:

Product Type:	Recombinant Proteins
Description:	Recombinant protein of human methionyl aminopeptidase 1 (METAP1), 100 µg
Species:	Human
Expression Host:	HEK293T
Expression cDNA Clone or AA Sequence:	>RC203022 representing NM_015143 <b>Red</b> =Cloning site <b>Green</b> =Tags(s)
	<p>MSESEQALKGTSQIKLLSSEIDIEGMRLVCRLAREVLDVAAGMIKPGVTTEEIDHAVHLACIARNCYPSPL NYYNFPKSCCTSVNEVICHGIPDRRPLQEGDIVNVDITLYRNGYHGDLNETFFVGEVDDGARKLVQTTYE CLMQAIDAVKPGVRYRELGNIIQKHAQANGFSVRSYCGHGIHKLFTAPNVPHYAKNKAVGVMKSGHVF TIEPMICEGGWQDETWPDGWTAVTRDGKRSAQFEHTLLVTDTGCEILTRRLDSARPHFMSQF</p> <p><b>TRTRPLEQKLISEEDLAANDILDYKDDDDKV</b></p>
Tag:	C-Myc/DDK
Predicted MW:	43 kDa
Concentration:	>0.05 µg/µL as determined by microplate BCA method
Purity:	> 80% as determined by SDS-PAGE and Coomassie blue staining
Buffer:	25 mM Tris-HCl, 100 mM glycine, pH 7.3, 10% glycerol
Preparation:	Recombinant protein was captured through anti-DDK affinity column followed by conventional chromatography steps.
Note:	For testing in cell culture applications, please filter before use. Note that you may experience some loss of protein during the filtration process.
Storage:	Store at -80°C.
Stability:	Stable for 12 months from the date of receipt of the product under proper storage and handling conditions. Avoid repeated freeze-thaw cycles.
RefSeq:	<a href="#">NP_055958</a>
Locus ID:	23173
UniProt ID:	<a href="#">P53582</a>



[View online »](#)

RefSeq Size: 2835

Cytogenetics: 4q23

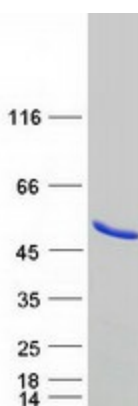
RefSeq ORF: 816

Synonyms: MAP1A; MetAP1A

**Summary:** Cotranslationally removes the N-terminal methionine from nascent proteins. The N-terminal methionine is often cleaved when the second residue in the primary sequence is small and uncharged (Met-Ala-, Cys, Gly, Pro, Ser, Thr, or Val). Required for normal progression through the cell cycle.[UniProtKB/Swiss-Prot Function]

**Protein Families:** Druggable Genome

### Product images:



Coomassie blue staining of purified METAP1 protein (Cat# [TP303022]). The protein was produced from HEK293T cells transfected with METAP1 cDNA clone (Cat# [RC203022]) using MegaTran 2.0 (Cat# [TT210002]).