

Product datasheet for **TP303017M**

C1orf57 (NTPCR) (NM_032324) Human Recombinant Protein

Product data:

Product Type:	Recombinant Proteins
Description:	Recombinant protein of human chromosome 1 open reading frame 57 (C1orf57), 100 µg
Species:	Human
Expression Host:	HEK293T
Expression cDNA Clone or AA Sequence:	>RC203017 protein sequence Red =Cloning site Green =Tags(s)
	MARHVFLTGPPGVGKTTLIHKASEVLKSSGVPVDGFYTEEVRRQGGRRIGFDVVTLSGTRGPLSRVGLPEPP PGKRECRVGYVVDLTSFEQLALPVLNRNADCSSGPGQRVCVIDEIGKMEFLSQFLFIQAVRQTLSTPGTII LGTIPVPGKGPLALVEEIRNRKDVKVFNVTKENRNHLLPDIIVTCVQSSRK
	TRTRPLEQKLISEEDLAANDILDYKDDDDKV
Tag:	C-Myc/DDK
Predicted MW:	20.5 kDa
Concentration:	>0.05 µg/µL as determined by microplate BCA method
Purity:	> 80% as determined by SDS-PAGE and Coomassie blue staining
Buffer:	25 mM Tris-HCl, 100 mM glycine, pH 7.3, 10% glycerol
Preparation:	Recombinant protein was captured through anti-DDK affinity column followed by conventional chromatography steps.
Note:	For testing in cell culture applications, please filter before use. Note that you may experience some loss of protein during the filtration process.
Storage:	Store at -80°C.
Stability:	Stable for 12 months from the date of receipt of the product under proper storage and handling conditions. Avoid repeated freeze-thaw cycles.
RefSeq:	<u>NP_115700</u>
Locus ID:	84284
UniProt ID:	<u>Q9BSD7</u> , <u>Q5TDE9</u>
RefSeq Size:	926



[View online »](#)

Cytogenetics: 1q42.2

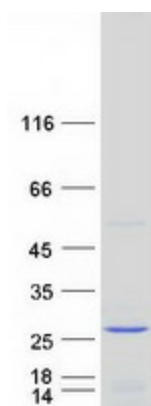
RefSeq ORF: 570

Synonyms: C1orf57; HCR-NTPase; THEP1

Summary: The protein encoded by this gene is a non-specific nucleoside triphosphatase that is slow-acting in vitro. This gene is overexpressed in many tumor tissues, and while it is not essential for the cell, overexpression is cytotoxic. However, the cytotoxicity is not related to its triphosphatase activity. [provided by RefSeq, Jul 2016]

Protein Families: Protease

Product images:



Coomassie blue staining of purified NTPCR protein (Cat# [TP303017]). The protein was produced from HEK293T cells transfected with NTPCR cDNA clone (Cat# [RC203017]) using MegaTran 2.0 (Cat# [TT210002]).