

Product datasheet for **TP303002M**

C16orf13 (METTL26) (NM_001040161) Human Recombinant Protein

Product data:

Product Type: Recombinant Proteins

Description: Recombinant protein of human chromosome 16 open reading frame 13 (C16orf13), transcript variant 3, 100 µg

Species: Human

Expression Host: HEK293T

Expression cDNA Clone or AA Sequence: >RC203002 protein sequence
Red=Cloning site **Green**=Tags(s)

MLVAAAERKNDPILHVLRLQYLDPAQRGVRVLEVASGSGQHAAHFARAFPLAEWQPSDVDQRCLDRNPEW
GLRDTALLEDLGKASGLLLERMVDMPANNKCLIFRKN

TRTRPLEQKLISEEDLAANDILDYKDDDDKV

Tag: C-Myc/DDK

Predicted MW: 11.8 kDa

Concentration: >0.05 µg/µL as determined by microplate BCA method

Purity: > 80% as determined by SDS-PAGE and Coomassie blue staining

Buffer: 25 mM Tris-HCl, 100 mM glycine, pH 7.3, 10% glycerol

Preparation: Recombinant protein was captured through anti-DDK affinity column followed by conventional chromatography steps.

Note: For testing in cell culture applications, please filter before use. Note that you may experience some loss of protein during the filtration process.

Storage: Store at -80°C.

Stability: Stable for 12 months from the date of receipt of the product under proper storage and handling conditions. Avoid repeated freeze-thaw cycles.

RefSeq: [NP_001035251](#)

Locus ID: 84326

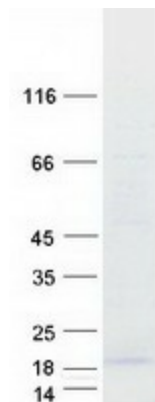
UniProt ID: [Q96S19](#)

RefSeq Size: 570



[View online »](#)

Cytogenetics: 16p13.3
RefSeq ORF: 321
Synonyms: C16orf13; JFP2

Product images:

Coomassie blue staining of purified METTL26 protein (Cat# [TP303002]). The protein was produced from HEK293T cells transfected with METTL26 cDNA clone (Cat# [RC203002]) using MegaTran 2.0 (Cat# [TT210002]).