

## Product datasheet for **TP302993M**

### MAP6D1 (NM\_024871) Human Recombinant Protein

#### Product data:

Product Type:	Recombinant Proteins
Description:	Purified recombinant protein of Homo sapiens MAP6 domain containing 1 (MAP6D1), 100 µg
Species:	Human
Expression Host:	HEK293T
Expression cDNA Clone or AA Sequence:	>RC202993 representing NM_024871 <b>Red</b> =Cloning site <b>Green</b> =Tags(s)  MAWPCISRLCCLARRWNQLDRSDVAVPLTLHGYSDDLSEEPGTGGAASRRGQPPAGARDSGRDVPLTQY Q RDFGLWTPAGPKDPPPGRGPAGGRRGKSSAQSSAPPAGARGVYVLPIGDADAAA VTTSYRQEFQA W TGVKPSRSTKTKPARVITHTSGWDSSPGAGFQVPEVRKKFTPNPSAIFQASAPRILNV  <b>TRTRPLEQKLISEEDLAANDILDYKDDDDKV</b>
Tag:	C-Myc/DDK
Predicted MW:	20.8 kDa
Concentration:	>0.05 µg/µL as determined by microplate BCA method
Purity:	> 80% as determined by SDS-PAGE and Coomassie blue staining
Buffer:	25 mM Tris-HCl, 100 mM glycine, pH 7.3, 10% glycerol
Preparation:	Recombinant protein was captured through anti-DDK affinity column followed by conventional chromatography steps.
Note:	For testing in cell culture applications, please filter before use. Note that you may experience some loss of protein during the filtration process.
Storage:	Store at -80°C.
Stability:	Stable for 12 months from the date of receipt of the product under proper storage and handling conditions. Avoid repeated freeze-thaw cycles.
RefSeq:	<u><a href="#">NP_079147</a></u>
Locus ID:	79929



[View online »](#)

UniProt ID: [Q9H9H5](#)

RefSeq Size: 2104

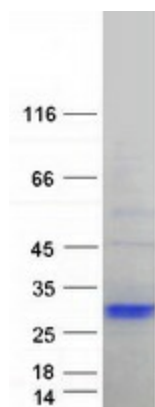
Cytogenetics: 3q27.1

RefSeq ORF: 597

Synonyms: MAPO6D1; SL21

**Summary:** This gene encodes a protein highly similar to the mouse MAP6 domain containing 1 protein, which is related to the STOP proteins. Based on the study of the mouse protein, the encoded protein may function as a calmodulin-regulated neuronal protein that binds and stabilizes microtubules but also associates with the Golgi membranes through N-terminal palmitoylation. [provided by RefSeq, Oct 2008]

## Product images:



Coomassie blue staining of purified MAP6D1 protein (Cat# [TP302993]). The protein was produced from HEK293T cells transfected with MAP6D1 cDNA clone (Cat# [RC202993]) using MegaTran 2.0 (Cat# [TT210002]).