

Product datasheet for **TP302975M**

CHCHD6 (NM_032343) Human Recombinant Protein

Product data:

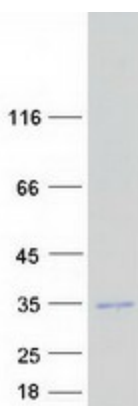
Product Type:	Recombinant Proteins
Description:	Recombinant protein of human coiled-coil-helix-coiled-coil-helix domain containing 6 (CHCHD6), 100 µg
Species:	Human
Expression Host:	HEK293T
Expression cDNA Clone or AA Sequence:	>RC202975 protein sequence Red =Cloning site Green =Tags(s)
	<p>MGSTESSEGRRVSGVDEEERVRLQGVRLSENWVNRMKPSSPPPAPTSTFGLQDGNLRAPHKESTLP RSGSSGGQQPSGMKEGVKRYEQEHAAIQDKLFQVAKREREAATKHSKASLPTGEGSISHEEQKSVRLARE LESREAELRRRDTFYKEQLERIERKNAEMYKLSSEQFHEAASKMESTIKPRRVEPVCSGLQAQILHCYRD RPHEVLLCSDLVKAYQRCVSAAHKG</p> <p>TRTRPLEQKLISEEDLAANDILDYKDDDDKV</p>
Tag:	C-Myc/DDK
Predicted MW:	26.3 kDa
Concentration:	>0.05 µg/µL as determined by microplate BCA method
Purity:	> 80% as determined by SDS-PAGE and Coomassie blue staining
Buffer:	25 mM Tris-HCl, 100 mM glycine, pH 7.3, 10% glycerol
Preparation:	Recombinant protein was captured through anti-DDK affinity column followed by conventional chromatography steps.
Note:	For testing in cell culture applications, please filter before use. Note that you may experience some loss of protein during the filtration process.
Storage:	Store at -80°C.
Stability:	Stable for 12 months from the date of receipt of the product under proper storage and handling conditions. Avoid repeated freeze-thaw cycles.
RefSeq:	<u>NP_115719</u>
Locus ID:	84303



[View online »](#)

UniProt ID:	Q9BRQ6
RefSeq Size:	1020
Cytogenetics:	3q21.3
RefSeq ORF:	705
Synonyms:	CHCM1; Mic25; MICOS25; PPP1R23
Summary:	Component of the MICOS complex, a large protein complex of the mitochondrial inner membrane that plays crucial roles in the maintenance of crista junctions, inner membrane architecture, and formation of contact sites to the outer membrane.[UniProtKB/Swiss-Prot Function]

Product images:



Coomassie blue staining of purified CHCHD6 protein (Cat# [TP302975]). The protein was produced from HEK293T cells transfected with CHCHD6 cDNA clone (Cat# [RC202975]) using MegaTran 2.0 (Cat# [TT210002]).