

Product datasheet for **TP302975L**

CHCHD6 (NM_032343) Human Recombinant Protein

Product data:

Product Type: Recombinant Proteins

Description: Recombinant protein of human coiled-coil-helix-coiled-coil-helix domain containing 6 (CHCHD6), 1 mg

Species: Human

Expression Host: HEK293T

Expression cDNA Clone or AA Sequence: >RC202975 protein sequence
Red=Cloning site **Green**=Tags(s)

MGSTESSEGRRVSGVDEEERVRLQGVRLSENWVNRMKPSSPPPAPTSTFGLQDGNLRAPHKESTLP
RSGSSGGQQPSGMKEGVKRYEQEHAAIQDKLFQVAKREREAATKHSKASLPTGEGSISHEEQKSVRLARE
LESREAELRRRDTFYKEQLERIERKNAEMYKLSSEQFHEAASKMESTIKPRRVEPVCSGLQAQILHCYRD
RPHEVLLCSDLVKAYQRCVSAAHKG

TRTRPLEQKLISEEDLAANDILDYKDDDDKV

Tag: C-Myc/DDK

Predicted MW: 26.3 kDa

Concentration: >0.05 µg/µL as determined by microplate BCA method

Purity: > 80% as determined by SDS-PAGE and Coomassie blue staining

Buffer: 25 mM Tris-HCl, 100 mM glycine, pH 7.3, 10% glycerol

Preparation: Recombinant protein was captured through anti-DDK affinity column followed by conventional chromatography steps.

Note: For testing in cell culture applications, please filter before use. Note that you may experience some loss of protein during the filtration process.

Storage: Store at -80°C.

Stability: Stable for 12 months from the date of receipt of the product under proper storage and handling conditions. Avoid repeated freeze-thaw cycles.

RefSeq: [NP_115719](#)

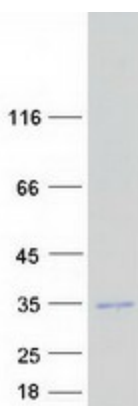
Locus ID: 84303



[View online »](#)

UniProt ID:	Q9BRQ6
RefSeq Size:	1020
Cytogenetics:	3q21.3
RefSeq ORF:	705
Synonyms:	CHCM1; Mic25; MICOS25; PPP1R23
Summary:	Component of the MICOS complex, a large protein complex of the mitochondrial inner membrane that plays crucial roles in the maintenance of crista junctions, inner membrane architecture, and formation of contact sites to the outer membrane.[UniProtKB/Swiss-Prot Function]

Product images:



Coomassie blue staining of purified CHCHD6 protein (Cat# [TP302975]). The protein was produced from HEK293T cells transfected with CHCHD6 cDNA clone (Cat# [RC202975]) using MegaTran 2.0 (Cat# [TT210002]).