

## Product datasheet for **TP302955M**

### PLA2G12A (NM\_030821) Human Recombinant Protein

#### Product data:

Product Type:	Recombinant Proteins
Description:	Recombinant protein of human phospholipase A2, group XIA (PLA2G12A), 100 µg
Species:	Human
Expression Host:	HEK293T
Expression cDNA Clone or AA Sequence:	>RC202955 representing NM_030821 <b>Red</b> =Cloning site <b>Green</b> =Tags(s)
	MALLSRPALTLLLLLMAAVVRCQEQAQTTDWRATLKTIRNGVHKIDTYLNAALDLLGGEDGLCQYKCS SDGSKPFPRYGYKPSPPNGCGSPLFGVHLNIGIPSLTKCCNQHDRCYETCGKSKNDCDEEFQYCLSKICRDVQ KTLGLTQHVQACETTVELLFDVSVIHLGCKPYLDSQRAACRCHYEKTDL
	<b>TRTRPLEQKLISEEDLAANDILDYKDDDDKV</b>
Tag:	C-Myc/DDK
Predicted MW:	20.9 kDa
Concentration:	>0.05 µg/µL as determined by microplate BCA method
Purity:	> 80% as determined by SDS-PAGE and Coomassie blue staining
Buffer:	25 mM Tris-HCl, 100 mM glycine, pH 7.3, 10% glycerol
Preparation:	Recombinant protein was captured through anti-DDK affinity column followed by conventional chromatography steps.
Note:	For testing in cell culture applications, please filter before use. Note that you may experience some loss of protein during the filtration process.
Storage:	Store at -80°C.
Stability:	Stable for 12 months from the date of receipt of the product under proper storage and handling conditions. Avoid repeated freeze-thaw cycles.
RefSeq:	<u><a href="#">NP_110448</a></u>
Locus ID:	81579
UniProt ID:	<u><a href="#">Q9BZM1</a></u> , <u><a href="#">Q542Y6</a></u>
RefSeq Size:	1699



[View online »](#)

Cytogenetics: 4q25

RefSeq ORF: 567

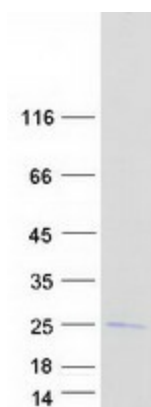
Synonyms: GXII; PLA2G12; ROSSY

**Summary:** Secreted phospholipase A2 (sPLA2) enzymes liberate arachidonic acid from phospholipids for production of eicosanoids and exert a variety of physiologic and pathologic effects. Group XII sPLA2s, such as PLA2G12A, have relatively low specific activity and are structurally and functionally distinct from other sPLA2s (Gelb et al., 2000 [PubMed 11031251]).[supplied by OMIM, Mar 2008]

**Protein Families:** Druggable Genome, Secreted Protein

**Protein Pathways:** alpha-Linolenic acid metabolism, Arachidonic acid metabolism, Ether lipid metabolism, Fc epsilon RI signaling pathway, Glycerophospholipid metabolism, GnRH signaling pathway, Linoleic acid metabolism, Long-term depression, MAPK signaling pathway, Metabolic pathways, Vascular smooth muscle contraction, VEGF signaling pathway

### Product images:



Coomassie blue staining of purified PLA2G12A protein (Cat# [TP302955]). The protein was produced from HEK293T cells transfected with PLA2G12A cDNA clone (Cat# [RC202955]) using MegaTran 2.0 (Cat# [TT210002]).