

Product datasheet for **TP302955**

PLA2G12A (NM_030821) Human Recombinant Protein

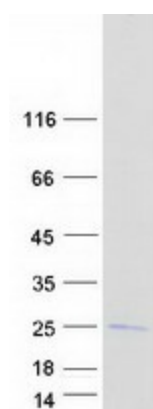
Product data:

Product Type:	Recombinant Proteins
Description:	Recombinant protein of human phospholipase A2, group XIA (PLA2G12A), 20 µg
Species:	Human
Expression Host:	HEK293T
Expression cDNA Clone or AA Sequence:	>RC202955 representing NM_030821 Red =Cloning site Green =Tags(s)
	 MALLSRPALTL L L L L L M A A V R C Q E Q A Q T T D W R A T L K T I R N G V H K I D T Y L N A A L D L L G G E D G L C Q Y K C S D G S K P F P R Y G Y K P S P P N G C G S P L F G V H L N I G I P S L T K C C N Q H D R C Y E T C G K S K N D C D E E F Q Y C L S K I C R D V Q K T L G L T Q H V Q A C E T T V E L L F D S V I H L G C K P Y L D S Q R A A C R C H Y E E K T D L T R T R P L E Q K L I S E E D L A A N D I L D Y K D D D D K V
Tag:	C-Myc/DDK
Predicted MW:	20.9 kDa
Concentration:	>0.05 µg/µL as determined by microplate BCA method
Purity:	> 80% as determined by SDS-PAGE and Coomassie blue staining
Buffer:	25 mM Tris-HCl, 100 mM glycine, pH 7.3, 10% glycerol
Preparation:	Recombinant protein was captured through anti-DDK affinity column followed by conventional chromatography steps.
Note:	For testing in cell culture applications, please filter before use. Note that you may experience some loss of protein during the filtration process.
Storage:	Store at -80°C.
Stability:	Stable for 12 months from the date of receipt of the product under proper storage and handling conditions. Avoid repeated freeze-thaw cycles.
RefSeq:	NP_110448
Locus ID:	81579
UniProt ID:	Q9BZM1
RefSeq Size:	1699



[View online »](#)

Cytogenetics:	4q25
RefSeq ORF:	567
Synonyms:	GXII; PLA2G12; ROSSY
Summary:	Secreted phospholipase A2 (sPLA2) enzymes liberate arachidonic acid from phospholipids for production of eicosanoids and exert a variety of physiologic and pathologic effects. Group XII sPLA2s, such as PLA2G12A, have relatively low specific activity and are structurally and functionally distinct from other sPLA2s (Gelb et al., 2000 [PubMed 11031251]).[supplied by OMIM, Mar 2008]
Protein Families:	Druggable Genome, Secreted Protein
Protein Pathways:	alpha-Linolenic acid metabolism, Arachidonic acid metabolism, Ether lipid metabolism, Fc epsilon RI signaling pathway, Glycerophospholipid metabolism, GnRH signaling pathway, Linoleic acid metabolism, Long-term depression, MAPK signaling pathway, Metabolic pathways, Vascular smooth muscle contraction, VEGF signaling pathway

Product images:

Coomassie blue staining of purified PLA2G12A protein (Cat# TP302955). The protein was produced from HEK293T cells transfected with PLA2G12A cDNA clone (Cat# [RC202955]) using MegaTran 2.0 (Cat# [TT210002]).