

Product datasheet for **TP302935L**

PLCD4 (NM_032726) Human Recombinant Protein

Product data:

Product Type:	Recombinant Proteins
Description:	Recombinant protein of human phospholipase C, delta 4 (PLCD4), 1 mg
Species:	Human
Expression Host:	HEK293T
Expression cDNA Clone or AA Sequence:	>Peptide sequence encoded by RC202935 Blue=ORF Red=Cloning site Green=Tag(s)

MASLLQDQLTTDQDLLLMQEGMSMRKVRSKSWKKLRYFRLQNDGMTVWHARQARGSAKPSFSISDVETI
RNGHDSSELLRSLAEELPLEQGFTIVFHGRRSNLDLMANSVEEAQIWMRGLQLLVDLVTSMDHQRERLDQW
LSDWFQRGDKNQDGKMSFQEVQRLHLMNVEMDQEYAFSLFQAADTSQSGTLEGEFVQFYKALTKRAE
VQELFESFSADGQKLTLLFLDFLQEEQKERDCTSELALELIDRYEPSDSGKLRHVLSMDGFLSYLCSK
DGDIFNPACLPIYQDMTQPLNHYFICSSHNTYLVGDQLCGQSSVEGYIRALKRGCRCVEVDVWDGSPGE
PVVYHGHTLTSRILFKDVATVAQYAFQTSYDYPVILSLETHCSWEQQQTMARHLTEILGEQLLSTTLDG
VLPTQLPSPEELRRKILVKGKKLLEEDLEYEEEEAEPELEESELALESQFETEPEPQEQLNQNKDKKK
KSKPILCPALSSLVYKSVSFRSFTHSKEHYHFYEISSFSETKAKRLIKEAGNEFVQHNTWQLSRVYP
SGLRTDSSNYPQELWNAGCQMVAMNMQTAGLEMDICDGHFRQNGGCGYVLPDFLRDIQSSFHPEKPI
SPFKAQTLIQVISGQQLPKVDKTEGSIVDPLVKVQIFGVRLDTARQETNYVENNGFNYPWGTLCFR
VLVPELAMLRVMDYDWKSRNDFIGQYTLPWTCMQQGYRHIHLLSKDGISLRPASIFVYICIQEGLEG
DES
TRTRPLEQKLISEEDLAANDILDYKDDDDKV

Recombinant protein using RC202935 also available, [TP302935](#)

Tag:	C-Myc/DDK
Predicted MW:	87.4 kDa
Concentration:	>0.05 µg/µL as determined by microplate BCA method
Purity:	> 80% as determined by SDS-PAGE and Coomassie blue staining
Buffer:	25 mM Tris-HCl, 100 mM glycine, pH 7.3, 10% glycerol
Preparation:	Recombinant protein was captured through anti-DDK affinity column followed by conventional chromatography steps.



[View online »](#)

Note: For testing in cell culture applications, please filter before use. Note that you may experience some loss of protein during the filtration process.

Storage: Store at -80°C.

Stability: Stable for 12 months from the date of receipt of the product under proper storage and handling conditions. Avoid repeated freeze-thaw cycles.

RefSeq: [NP_116115](#)

Locus ID: 84812

UniProt ID: [Q9BRC7](#)

RefSeq Size: 3237

Cytogenetics: 2q35

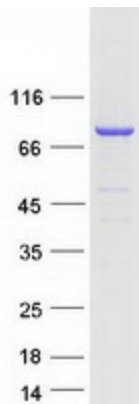
RefSeq ORF: 2286

Summary: This gene encodes a member of the delta class of phospholipase C enzymes. Phospholipase C enzymes play a critical role in many cellular processes by hydrolyzing phosphatidylinositol 4,5-bisphosphate into two intracellular second messengers, inositol 1,4,5-trisphosphate and diacylglycerol. Expression of this gene may be a marker for cancer. [provided by RefSeq, Jan 2011]

Protein Families: Druggable Genome

Protein Pathways: Calcium signaling pathway, Inositol phosphate metabolism, Metabolic pathways, Phosphatidylinositol signaling system

Product images:



Coomassie blue staining of purified PLCD4 protein (Cat# [TP302935]). The protein was produced from HEK293T cells transfected with PLCD4 cDNA clone (Cat# [RC202935]) using MegaTran 2.0 (Cat# [TT210002]).