

## Product datasheet for TP302927

### RRAD (NM\_004165) Human Recombinant Protein

#### Product data:

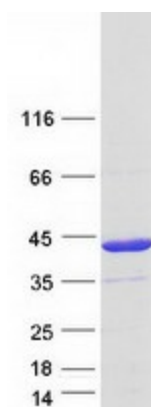
Product Type:	Recombinant Proteins
Description:	Recombinant protein of human Ras-related associated with diabetes (RRAD), transcript variant 2, 20 µg
Species:	Human
Expression Host:	HEK293T
Expression cDNA Clone or AA Sequence:	>RC202927 representing NM_004165 <b>Red</b> =Cloning site <b>Green</b> =Tags(s)
	<p>MTLN<del>GG</del>SGAGGSRGGGQERERRRGSTPWGPAPPLHRRSMPVDERDLQAALTPGALTA<del>AA</del>AGTGTQGPRLDWPEDSEDSLSSGGSDSDSVYK<del>V</del>LLLGAPGVGKSALARIFGGVEDGPEAEAAAGHTYDRSIVVDGEEASLMVYDIWEQDGGRWLPGHCMAMGDAYVIVYSVTDKGSFEKASELRVQLRRARQTDDVP<del>I</del>LVGNKSDLVRSREVSVDEGRACAVFDCKFIETSAALHHNVQALFEGVVRQIRLRRDSKEANARRQAGTRRRESLGKKAKRFLGRIVARNSRKMAFRAKSKSCHDLSVL</p> <p><b>TRTRPLEQKLISEEDLAANDILDYKDDDDKV</b></p>
Tag:	C-Myc/DDK
Predicted MW:	33.1 kDa
Concentration:	>0.05 µg/µL as determined by microplate BCA method
Purity:	> 80% as determined by SDS-PAGE and Coomassie blue staining
Buffer:	25 mM Tris-HCl, 100 mM glycine, pH 7.3, 10% glycerol
Preparation:	Recombinant protein was captured through anti-DDK affinity column followed by conventional chromatography steps.
Note:	For testing in cell culture applications, please filter before use. Note that you may experience some loss of protein during the filtration process.
Storage:	Store at -80°C.
Stability:	Stable for 12 months from the date of receipt of the product under proper storage and handling conditions. Avoid repeated freeze-thaw cycles.
RefSeq:	<u><a href="#">NP_004156</a></u>
Locus ID:	6236



[View online »](#)

UniProt ID:	<a href="#">P55042</a> , <a href="#">A0A024R6X0</a>
RefSeq Size:	1443
Cytogenetics:	16q22.1
RefSeq ORF:	924
Synonyms:	RAD; RAD1; REM3
Summary:	May play an important role in cardiac antiarrhythmia via the strong suppression of voltage-gated L-type Ca(2+) currents. Regulates voltage-dependent L-type calcium channel subunit alpha-1C trafficking to the cell membrane (By similarity). Inhibits cardiac hypertrophy through the calmodulin-dependent kinase II (CaMKII) pathway. Inhibits phosphorylation and activation of CAMK2D.[UniProtKB/Swiss-Prot Function]

### Product images:



Coomassie blue staining of purified RRAD protein (Cat# TP302927). The protein was produced from HEK293T cells transfected with RRAD cDNA clone (Cat# [RC202927]) using MegaTran 2.0 (Cat# [TT210002]).