

## Product datasheet for **TP302926L**

### ROR alpha (RORA) (NM\_134261) Human Recombinant Protein

#### Product data:

|                       |   |
|-----------------------|---|
| Product Type:         | Recombinant Proteins  |
| Description:          | Recombinant protein of human RAR-related orphan receptor A (RORA), transcript variant 1, 1 mg |
| Species:              | Human   |
| Expression Host:      | HEK293T   |
| Expression cDNA       | >RC202926 representing NM_134261  |
| Clone or AA Sequence: | Red=Cloning site Green=Tags(s)  |

MESAPAAPDPAASEPGSSGADAAAGSRETPLNQESARKSEPPAPVRRQSYSSTSRGISVTKKHTHTSQIEI  
IPCKICGDKSSGIHYGVITCEGCKGFFRRSQSNATYSCPRQKNCLIDRTSRNRCQHCLQKCLAVGMSR  
DAVKFGRMSKKQRDSLYAEVQKHRMQQQQRDHQQQPGAEPLTPTYNISANGLTELHDDLSDNYIDGHTPE  
GSKADSAVSSFYLDIQSPDQSGLDINGIKPEPICDYTPASGFFPYCSFTNGETSPTVSMAELEHLAQNI  
SKSHLETCQYLREELQQITWQTFLLQEEIENYQNKQREVMWQLCAIKITEAIQYVVEFAKRIDGFMELCQN  
DQIVLLKAGSLEVVFIRMCRAFDSQNNTVYFDGKYASPDVFKSLGCEDFISVFVEFGKSLCSMHLTEDEI  
ALFSAFVLMMSADRSWLQEKVKIEKLQKIQALQHLVQKNHREDGILTKLICKVSTLRALCGRHTEKLMA  
FKAIYPDIVRLHFPPPLYKELTSEFEPAMQIDG

TRTRPLEQKLISEEDLAANDILDYKDDDDKV

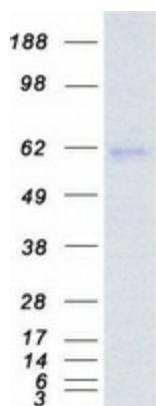
|                |  |
|----------------|--|
| Tag:           | C-Myc/DDK  |
| Predicted MW:  | 58.8 kDa   |
| Concentration: | >0.05 µg/µL as determined by microplate BCA method   |
| Purity:        | > 80% as determined by SDS-PAGE and Coomassie blue staining  |
| Buffer:        | 25 mM Tris-HCl, 100 mM glycine, pH 7.3, 10% glycerol   |
| Preparation:   | Recombinant protein was captured through anti-DDK affinity column followed by conventional chromatography steps.                                     |
| Note:          | For testing in cell culture applications, please filter before use. Note that you may experience some loss of protein during the filtration process. |
| Storage:       | Store at -80°C.  |



[View online »](#)

|                          |   |
|--------------------------|---|
| <b>Stability:</b>        | Stable for 12 months from the date of receipt of the product under proper storage and handling conditions. Avoid repeated freeze-thaw cycles.   |
| <b>RefSeq:</b>           | <a href="#">NP_599023</a>   |
| <b>Locus ID:</b>         | 6095  |
| <b>UniProt ID:</b>       | <a href="#">P35398</a>  |
| <b>RefSeq Size:</b>      | 1847  |
| <b>Cytogenetics:</b>     | 15q22.2   |
| <b>RefSeq ORF:</b>       | 1569  |
| <b>Synonyms:</b>         | IDDECA; NR1F1; ROR1; ROR2; ROR3; RZR-ALPHA; RZRA  |
| <b>Summary:</b>          | The protein encoded by this gene is a member of the NR1 subfamily of nuclear hormone receptors. It can bind as a monomer or as a homodimer to hormone response elements upstream of several genes to enhance the expression of those genes. The encoded protein has been shown to interact with NM23-2, a nucleoside diphosphate kinase involved in organogenesis and differentiation, as well as with NM23-1, the product of a tumor metastasis suppressor candidate gene. Also, it has been shown to aid in the transcriptional regulation of some genes involved in circadian rhythm. Four transcript variants encoding different isoforms have been described for this gene. [provided by RefSeq, Feb 2014] |
| <b>Protein Families:</b> | Druggable Genome, Nuclear Hormone Receptor, Transcription Factors   |

### Product images:



Coomassie blue staining of purified RORA protein (Cat# [TP302926]). The protein was produced from HEK293T cells transfected with RORA cDNA clone (Cat# [RC202926]) using MegaTran 2.0 (Cat# [TT210002]).