

Product datasheet for **TP302923L**

DLK (DLK1) (NM_003836) Human Recombinant Protein

Product data:

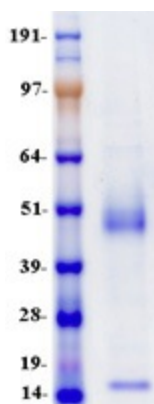
| | |
|--|---|
| Product Type: | Recombinant Proteins |
| Description: | Recombinant protein of human delta-like 1 homolog (Drosophila) (DLK1), 1 mg |
| Species: | Human |
| Expression Host: | HEK293T |
| Expression cDNA Clone or AA Sequence: | >RC202923 protein sequence Red =Cloning site Green =Tags(s) |
| | <p>MTATEALLRVLLLLLAFGHSTYGAECFPACNPQNGFCEDDNVCRCQPGWQGPLCDQCVTSPGCLHGLCG E PGQCICTDGWDGELCDRDVRACSSAPCANNGTCTVSLDDGLYECSCAPGYSGKDCQKKDGPCVINGSPCQ H GGTCVDDEGRASHASCLCPPGFSGNFCEIVANSCTPNPCENDGVCTDIGGDFRCRCPAGFIDKTC SRPVT NCASSPCQNGGTCLQHTQVSYECLCKPEFTGLTCVKKRALSPQQVTRL PNGYGLAYRLTPGVHEL PVQQP EHRILKVSMKELNKKTPLLTEGQAICFTILGVLTSLVVLGTVGIVFLNKCETWVSNLRYNHMLRKKKNLL LQYNSGEDLAVNIIFPEKIDMTTFSKEAGDEEI</p> <p>TRTRPLEQKLISEEDLAANDILDYKDDDDKV</p> |
| Tag: | C-Myc/DDK |
| Predicted MW: | 38.7 kDa |
| Concentration: | >0.05 µg/µL as determined by microplate BCA method |
| Purity: | > 80% as determined by SDS-PAGE and Coomassie blue staining |
| Buffer: | 25 mM Tris-HCl, 100 mM glycine, pH 7.3, 10% glycerol |
| Preparation: | Recombinant protein was captured through anti-DDK affinity column followed by conventional chromatography steps. |
| Note: | For testing in cell culture applications, please filter before use. Note that you may experience some loss of protein during the filtration process. |
| Storage: | Store at -80°C. |
| Stability: | Stable for 12 months from the date of receipt of the product under proper storage and handling conditions. Avoid repeated freeze-thaw cycles. |



[View online »](#)

| | |
|-------------------|--|
| RefSeq: | <u>NP_003827</u> |
| Locus ID: | 8788 |
| UniProt ID: | <u>P80370</u> |
| RefSeq Size: | 1599 |
| Cytogenetics: | 14q32.2 |
| RefSeq ORF: | 1149 |
| Synonyms: | Delta1; DLK; DLK-1; FA1; pG2; Pref-1; PREF1; ZOG |
| Summary: | This gene encodes a transmembrane protein that contains multiple epidermal growth factor repeats that functions as a regulator of cell growth. The encoded protein is involved in the differentiation of several cell types including adipocytes. This gene is located in a region of chromosome 14 frequently showing unparental disomy, and is imprinted and expressed from the paternal allele. A single nucleotide variant in this gene is associated with child and adolescent obesity and shows polar overdominance, where heterozygotes carrying an active paternal allele express the phenotype, while mutant homozygotes are normal. [provided by RefSeq, Nov 2015] |
| Protein Families: | Druggable Genome, ES Cell Differentiation/IPS, Transmembrane |

Product images:



Coomassie blue staining of purified DLK1 protein (Cat# [TP302923]). The protein was produced from HEK293T cells transfected with DLK1 cDNA clone (Cat# [RC202923]) using MegaTran 2.0 (Cat# [TT210002]).