

Product datasheet for **TP302923**

DLK (DLK1) (NM_003836) Human Recombinant Protein

Product data:

Product Type:	Recombinant Proteins
Description:	Recombinant protein of human delta-like 1 homolog (Drosophila) (DLK1), 20 µg
Species:	Human
Expression Host:	HEK293T
Expression cDNA Clone or AA Sequence:	>RC202923 protein sequence Red =Cloning site Green =Tags(s)
	<p>MTATEALLRVLLLLLAFGHSTYGAECFPACNPQNGFCEDDNVCRCPGWQGPLCDQCVTSPGCLHGLCGE PGQCICTDGWDGELCDRDVACSSAPCANNGTCSLDDGLYECSCAPGYSKDCQKKDGPCVINGSPCQH GGTCVDDEGRASHASCLCPPGFSGNFCEIVANSCTPNPCENDGVCTDIGGDFRCRCPAGFIDKTCRPVT NCASSPCQNGGTCLQHTQVSYECLCKPEFTGLTCVKKRALSPQVTRLPLNGYGLAYRLTPGVHELVPVQP EHRILKVSMEKLNKKTPLLTEGQAICFTILGVLTSVLVLTGTVGIVFLNKCETWWSNLRYNHMLRKKKNLL LQYNSGEDLAVNIIFPEKIDMTTFSKEAGDEEI</p> <p>TRTRPLEQKLISEEDLAANDILDYKDDDDKV</p>
Tag:	C-Myc/DDK
Predicted MW:	38.7 kDa
Concentration:	>0.05 µg/µL as determined by microplate BCA method
Purity:	> 80% as determined by SDS-PAGE and Coomassie blue staining
Buffer:	25 mM Tris-HCl, 100 mM glycine, pH 7.3, 10% glycerol
Preparation:	Recombinant protein was captured through anti-DDK affinity column followed by conventional chromatography steps.
Note:	For testing in cell culture applications, please filter before use. Note that you may experience some loss of protein during the filtration process.
Storage:	Store at -80°C.
Stability:	Stable for 12 months from the date of receipt of the product under proper storage and handling conditions. Avoid repeated freeze-thaw cycles.
RefSeq:	NP_003827
Locus ID:	8788



[View online »](#)

UniProt ID: [P80370](#), [A0A024R6L1](#), [A8K019](#)

RefSeq Size: 1599

Cytogenetics: 14q32.2

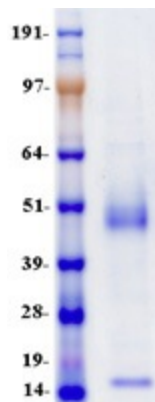
RefSeq ORF: 1149

Synonyms: Delta1; DLK; DLK-1; FA1; pG2; Pref-1; PREF1; ZOG

Summary: This gene encodes a transmembrane protein that contains multiple epidermal growth factor repeats that functions as a regulator of cell growth. The encoded protein is involved in the differentiation of several cell types including adipocytes. This gene is located in a region of chromosome 14 frequently showing uniparental disomy, and is imprinted and expressed from the paternal allele. A single nucleotide variant in this gene is associated with child and adolescent obesity and shows polar overdominance, where heterozygotes carrying an active paternal allele express the phenotype, while mutant homozygotes are normal. [provided by RefSeq, Nov 2015]

Protein Families: Druggable Genome, ES Cell Differentiation/IPS, Transmembrane

Product images:



Coomassie blue staining of purified DLK1 protein (Cat# TP302923). The protein was produced from HEK293T cells transfected with DLK1 cDNA clone (Cat# [RC202923]) using MegaTran 2.0 (Cat# [TT210002]).