

Product datasheet for **TP302917M**

Pet1 (FEV) (NM_017521) Human Recombinant Protein

Product data:

Product Type:	Recombinant Proteins
Description:	Recombinant protein of human FEV (ETS oncogene family) (FEV), 100 µg
Species:	Human
Expression Host:	HEK293T
Expression cDNA Clone or AA Sequence:	Recombinant protein was produced with TrueORF clone, RC202917.
Tag:	C-Myc/DDK
Predicted MW:	24.8 kDa
Concentration:	>0.05 µg/µL as determined by microplate BCA method
Purity:	> 80% as determined by SDS-PAGE and Coomassie blue staining
Buffer:	25 mM Tris-HCl, 100 mM glycine, pH 7.3, 10% glycerol
Preparation:	Recombinant protein was captured through anti-DDK affinity column followed by conventional chromatography steps.
Note:	For testing in cell culture applications, please filter before use. Note that you may experience some loss of protein during the filtration process.
Storage:	Store at -80°C.
Stability:	Stable for 12 months from the date of receipt of the product under proper storage and handling conditions. Avoid repeated freeze-thaw cycles.
RefSeq:	<u>NP_059991</u>
Locus ID:	54738
UniProt ID:	<u>Q99581</u>
RefSeq Size:	1901
Cytogenetics:	2q35
RefSeq ORF:	714
Synonyms:	HSRNAFEV; PET-1

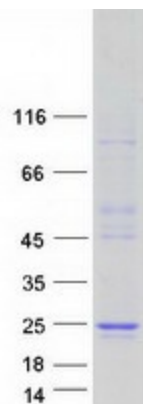

[View online »](#)

Summary:

This gene belongs to the ETS transcription factor family. ETS family members have a highly conserved 85-amino acid ETS domain that binds purine-rich DNA sequences. The alanine-rich C-terminus of this gene indicates that it may act as a transcription repressor. This gene is exclusively expressed in neurons of the central serotonin (5-HT) system, a system implicated in the pathogeny of such psychiatric diseases as depression, anxiety, and eating disorders. In some types of Ewing tumors, this gene is fused to the Ewing sarcoma (EWS) gene following chromosome translocations. [provided by RefSeq, Jul 2008]

Protein Families:

Druggable Genome, Transcription Factors

Product images:


Coomassie blue staining of purified FEV protein (Cat# [TP302917]). The protein was produced from HEK293T cells transfected with FEV cDNA clone (Cat# [RC202917]) using MegaTran 2.0 (Cat# [TT210002]).