

## Product datasheet for TP302912

### DHX16 (NM\_003587) Human Recombinant Protein

#### Product data:

Product Type:	Recombinant Proteins
Description:	Recombinant protein of human DEAH (Asp-Glu-Ala-His) box polypeptide 16 (DHX16), 20 µg
Species:	Human
Expression Host:	HEK293T
Expression cDNA Clone or AA Sequence:	>RC202912 protein sequence Red=Cloning site Green=Tags(s)

MATPAGLERWVQDELHSLVGLSERHVAQFLIGTAQRCTSAEEFVQRLRDTDTLDLSPARDFALRLWNKV  
PRKAVVEKPARAAEREARALLEKNRSYRLLEDSEESSEETVSRAGSSLQKKRKKRKHRLKKREEEEEEEA  
SEKGGKKTGGSKQQTEKPESEDEWERTERERLQDLEERDAFAERVQRDKDRTRNVLSRDKKAYEEAQK  
RLKMAEEDRKAMVPELRKKSREYLAKREREKLEDLEAELADEEFLFGDVLSRHERQELKYKRRVRDLA  
REYRAAGEQEKL EATNRYHMPKETRGQPARAVDLVEESGAPGEEQRRWEEARLGAASLKFGARDAASQE  
PKYQLVLEEEETIEFVRATQLQGDEEPSAPPTSTQAQKESIQAVRRSLPVFPFREELLAANHQVLII  
EGETGSGKTTQIPQYLFEEGYTNKGMKIACTQPRRVAAMSVAARVAREMGVKLGNEVGYSIRFEDCTSER  
TVLRYMTDGMMLREFLSEPLASYSVMVDEAHERTLHTDILFGLIKDVARFRPELKVLVASATMDTARF  
STFFDDAPVFRIPGRRFPVDIFYTKAPEADYLEACVSVLQIHVTQPPGDILVFLTGQEEIEAACEMLQD  
RCRRLGSKIRELLVLIYANLPSDMQARIFQPTPPGARKVWATNIAETSLTIEGIIYVLDPGFCKQKSY  
NPRTGMESLTVPCSKASANQRAGRAGRVAAGKCFRLYTAWAYQHELEETTVEIQRTSLGNVLLLKSL  
GIHDLMHFDLDFPPPYETLLLALQLYALGALNHLGELTTSGRKMAELPDPMLSKMILASEKYSCSEEI  
LTVAAMLSVNNSIFYRPKDKVHADNARVNFFLPGGDHLVLLNVYTQWAESGYSSQWCYENFVQFRSMRR  
ARDVREQLLEGLLERVEVGLSSCQGDYIRVRKAITAGYFYHTARLTRSGYRTVKQQQTVFIHPNSSLFEQQ  
PRWLLYHELVLTTKEFMRQVLEIESSWLVLEVAPHYYKAKELEDPHAKKMPKKKIGKTREELG

TRTRPLEQKLISEEDLAANDILDYKDDDDKV

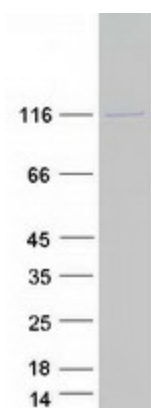
Tag:	C-Myc/DDK
Predicted MW:	119.1 kDa
Concentration:	>0.05 µg/µL as determined by microplate BCA method
Purity:	> 80% as determined by SDS-PAGE and Coomassie blue staining
Buffer:	25 mM Tris-HCl, 100 mM glycine, pH 7.3, 10% glycerol



[View online »](#)

<b>Preparation:</b>	Recombinant protein was captured through anti-DDK affinity column followed by conventional chromatography steps.
<b>Note:</b>	For testing in cell culture applications, please filter before use. Note that you may experience some loss of protein during the filtration process.
<b>Storage:</b>	Store at -80°C.
<b>Stability:</b>	Stable for 12 months from the date of receipt of the product under proper storage and handling conditions. Avoid repeated freeze-thaw cycles.
<b>RefSeq:</b>	<a href="#">NP_003578</a>
<b>Locus ID:</b>	8449
<b>UniProt ID:</b>	<a href="#">O60231</a> , <a href="#">Q5SQH4</a>
<b>RefSeq Size:</b>	3477
<b>Cytogenetics:</b>	6p21.33
<b>RefSeq ORF:</b>	3126
<b>Synonyms:</b>	DBP2; DDX16; NMOAS; PRO2014; Prp2; PRP8; PRPF2
<b>Summary:</b>	DEAD box proteins, characterized by the conserved motif Asp-Glu-Ala-Asp (DEAD), are putative RNA helicases. They are implicated in a number of cellular processes involving alteration of RNA secondary structure such as translation initiation, nuclear and mitochondrial splicing, and ribosome and spliceosome assembly. Based on their distribution patterns, some members of this family are believed to be involved in embryogenesis, spermatogenesis, and cellular growth and division. This gene encodes a DEAD box protein, which is a functional homolog of fission yeast Prp8 protein involved in cell cycle progression. This gene is mapped to the MHC region on chromosome 6p21.3, a region where many malignant, genetic and autoimmune disease genes are linked. Three transcript variants encoding different isoforms have been found for this gene. [provided by RefSeq, May 2018]
<b>Protein Pathways:</b>	Spliceosome

### Product images:



Coomassie blue staining of purified DHX16 protein (Cat# TP302912). The protein was produced from HEK293T cells transfected with DHX16 cDNA clone (Cat# [RC202912]) using MegaTran 2.0 (Cat# [TT210002]).