

Product datasheet for TP302910M

JM4 (PRAF2) (NM_007213) Human Recombinant Protein

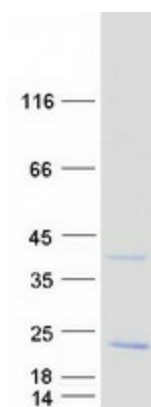
Product data:

| | |
|---------------------------------------|---|
| Product Type: | Recombinant Proteins |
| Description: | Recombinant protein of human PRA1 domain family, member 2 (PRAF2), 100 µg |
| Species: | Human |
| Expression Host: | HEK293T |
| Expression cDNA Clone or AA Sequence: | >RC202910 protein sequence Red =Cloning site Green =Tags(s) |
| | MSEVRLPPLRALDDFVLGSARLAAPDPCDPQRWCHRVINNLLYYQTNYLLCFGIGLALAGYVRPLHTLLS ALVVAVALGVLWAAETRAAVRRCRRSHPAACLA AVLAVGLLVLWVAGGACTFLFSIAGPVLLILVHASL RLRNLKNKIENKIESIGLKRTMPMGLLLEALGQEQEAGS |
| | TRTRPLEQKLISEEDLAANDILDYKDDDDKV |
| Tag: | C-Myc/DDK |
| Predicted MW: | 19.1 kDa |
| Concentration: | >0.05 µg/µL as determined by microplate BCA method |
| Purity: | > 80% as determined by SDS-PAGE and Coomassie blue staining |
| Buffer: | 25 mM Tris-HCl, 100 mM glycine, pH 7.3, 10% glycerol |
| Preparation: | Recombinant protein was captured through anti-DDK affinity column followed by conventional chromatography steps. |
| Note: | For testing in cell culture applications, please filter before use. Note that you may experience some loss of protein during the filtration process. |
| Storage: | Store at -80°C. |
| Stability: | Stable for 12 months from the date of receipt of the product under proper storage and handling conditions. Avoid repeated freeze-thaw cycles. |
| RefSeq: | <u>NP_009144</u> |
| Locus ID: | 11230 |
| UniProt ID: | <u>O60831</u> , <u>A0A024QZ22</u> |
| RefSeq Size: | 1316 |



[View online »](#)

| | |
|-------------------|---|
| Cytogenetics: | Xp11.23 |
| RefSeq ORF: | 534 |
| Synonyms: | JM4; Yip6a |
| Summary: | May be involved in ER/Golgi transport and vesicular traffic. Plays a proapoptotic role in cerulenin-induced neuroblastoma apoptosis.[UniProtKB/Swiss-Prot Function] |
| Protein Families: | Transmembrane |

Product images:

Coomassie blue staining of purified PRAF2 protein (Cat# [TP302910]). The protein was produced from HEK293T cells transfected with PRAF2 cDNA clone (Cat# [RC202910]) using MegaTran 2.0 (Cat# [TT210002]).