

Product datasheet for **TP302910L**

JM4 (PRAF2) (NM_007213) Human Recombinant Protein

Product data:

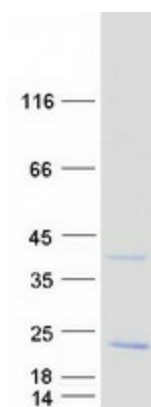
Product Type:	Recombinant Proteins
Description:	Recombinant protein of human PRA1 domain family, member 2 (PRAF2), 1 mg
Species:	Human
Expression Host:	HEK293T
Expression cDNA Clone or AA Sequence:	>RC202910 protein sequence Red =Cloning site Green =Tags(s)
	MSEVRLPPLRALDDFVLGSARLAAPDPCDPQRWCHRVINNLLYYQTNYLLCFGIGLALAGYVRPLHTLLS ALVVAVALGVLWAAETRAAVRRCRRSHPAACLA AVLAVGLLVLWVAGGACTFLFSIAGPVLLILVHASL RLRNLKMKIENKIESIGLKRTMPMGLLLEALGQEQEAGS
	TRTRPLEQKLISEEDLAANDILDYKDDDDKV
Tag:	C-Myc/DDK
Predicted MW:	19.1 kDa
Concentration:	>0.05 µg/µL as determined by microplate BCA method
Purity:	> 80% as determined by SDS-PAGE and Coomassie blue staining
Buffer:	25 mM Tris-HCl, 100 mM glycine, pH 7.3, 10% glycerol
Preparation:	Recombinant protein was captured through anti-DDK affinity column followed by conventional chromatography steps.
Note:	For testing in cell culture applications, please filter before use. Note that you may experience some loss of protein during the filtration process.
Storage:	Store at -80°C.
Stability:	Stable for 12 months from the date of receipt of the product under proper storage and handling conditions. Avoid repeated freeze-thaw cycles.
RefSeq:	<u>NP_009144</u>
Locus ID:	11230
UniProt ID:	<u>O60831</u> , <u>A0A024QZ22</u>
RefSeq Size:	1316



[View online »](#)

Cytogenetics:	Xp11.23
RefSeq ORF:	534
Synonyms:	JM4; Yip6a
Summary:	May be involved in ER/Golgi transport and vesicular traffic. Plays a proapoptotic role in cerulenin-induced neuroblastoma apoptosis.[UniProtKB/Swiss-Prot Function]
Protein Families:	Transmembrane

Product images:



Coomassie blue staining of purified PRAF2 protein (Cat# [TP302910]). The protein was produced from HEK293T cells transfected with PRAF2 cDNA clone (Cat# [RC202910]) using MegaTran 2.0 (Cat# [TT210002]).