

## Product datasheet for TP302890M

### MCC (NM\_002387) Human Recombinant Protein

#### Product data:

Product Type:	Recombinant Proteins
Description:	Recombinant protein of human mutated in colorectal cancers (MCC), transcript variant 2, 100 µg
Species:	Human
Expression Host:	HEK293T
Expression cDNA Clone or AA Sequence:	>RC202890 protein sequence <b>Red</b> =Cloning site <b>Green</b> =Tags(s)

MNSGVAMKYGNDSSAELSELHSAALASLKGDIVELNKRLQQTERERDLEKKLAKAQCEQSHLMREHED  
V  
QERTTLRYEERITELHSVIAELNKKIDRLQGTTIREEDEYSELRSELSQSQHEVNEDSRSMDDQDQTSVSI  
PENQSTMVTADMNCSLDLNSQLRVLGTLENVVCGRKKSSCSLSVAEVDRIEQLTTASEHCDLAIKTVE  
EIEGVLGRDLYPNLAEERSRWEKELAGLREENESLTAMLCSCKEELNRTKATMNAIREERDRLRRRVREL  
QTRLQSVQATGPSSPGRLTSTNRPINPSTGELSTSSSSNDIPIAKIAERVKLSKTRSESSSSDRPVLGSE  
ISSIGVSSVAEHLAHLQDCSNIQEIFQTLYSHGSAISESKIREFEVETERLNSRIEHLKSQNDLLTIT  
LEECKSNAERMSMLVGKYESNATALRLALQYSEQCIEAYELLALAESEQSLILGQFRAAGVGSSPGDQS  
GDENITQMLKRAHDCRKAENAANKALLMKLDGSCGGAFVAVAGCSVQPWESLSSNSHTSTTSSTASSCDTE  
FTKEDEQRLKDYIQQLKNDRAAVKLTMLELESIHIDPLSYDVKPRGDSQRDLLENVLMQELMAMKEEMA  
ELKAQLYLLEKEKKALELKLSTREAQEAYLVHIEHLKSEVEEQKEQRMRSLSSTSSGSKDKPGKECADA  
ASPALSLAELRTTCSENELAAEFTNAIRREKCLKARVQELVSALERLTKSSEIRHQSAEFVNDLKRANS  
NLVAAYEKAKKKHQNKLKLESQMMAMVERHETQVRMLKQRIALLEEENS RPHTNETSL

**TRTRPLEQKLISEEDLAANDILDYKDDDDKV**

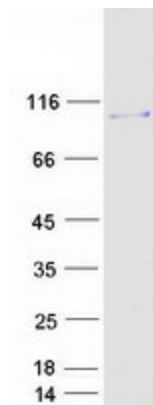
Tag:	C-Myc/DDK
Predicted MW:	92.9 kDa
Concentration:	>0.05 µg/µL as determined by microplate BCA method
Purity:	> 80% as determined by SDS-PAGE and Coomassie blue staining
Buffer:	25 mM Tris-HCl, 100 mM glycine, pH 7.3, 10% glycerol
Preparation:	Recombinant protein was captured through anti-DDK affinity column followed by conventional chromatography steps.



[View online »](#)

<b>Note:</b>	For testing in cell culture applications, please filter before use. Note that you may experience some loss of protein during the filtration process.
<b>Storage:</b>	Store at -80°C.
<b>Stability:</b>	Stable for 12 months from the date of receipt of the product under proper storage and handling conditions. Avoid repeated freeze-thaw cycles.
<b>RefSeq:</b>	<a href="#">NP_002378</a>
<b>Locus ID:</b>	4163
<b>UniProt ID:</b>	<a href="#">P23508</a>
<b>RefSeq Size:</b>	8223
<b>Cytogenetics:</b>	5q22.2
<b>RefSeq ORF:</b>	2487
<b>Synonyms:</b>	MCC1
<b>Summary:</b>	This gene is a candidate colorectal tumor suppressor gene that is thought to negatively regulate cell cycle progression. The orthologous gene in the mouse expresses a phosphoprotein associated with the plasma membrane and membrane organelles, and overexpression of the mouse protein inhibits entry into S phase. Multiple transcript variants encoding different isoforms have been found for this gene. [provided by RefSeq, Jul 2008]
<b>Protein Families:</b>	Druggable Genome

### Product images:



Coomassie blue staining of purified MCC protein (Cat# [TP302890]). The protein was produced from HEK293T cells transfected with MCC cDNA clone (Cat# [RC202890]) using MegaTran 2.0 (Cat# [TT210002]).