

Product datasheet for TP302890L

MCC (NM_002387) Human Recombinant Protein

Product data:

Product Type:	Recombinant Proteins
Description:	Recombinant protein of human mutated in colorectal cancers (MCC), transcript variant 2, 1 mg
Species:	Human
Expression Host:	HEK293T
Expression cDNA Clone or AA Sequence:	>RC202890 protein sequence Red =Cloning site Green =Tags(s)

MNSGVAMKYGNDSSAELSELHSAALASLKGDIVELNKRLQQTERERDLEKKLAKAQCEQSHLMREHED
V
QERTTLRYEERITELHSVIAELNKKIDRLQGTTIREEDEYSELRSELSQSQHEVNEDSRSMDDQDQTSVSI
PENQSTMVTADMNCSLDLNSQLRVLGTLENVVCGRKKSSCSLSVAEVDRIEQLTTASEHCDLAIKTVE
EIEGVLGRDLYPNLAEERSRWEKELAGLREENESLTAMLCSCKEELNRTKATMNAIREERDRLRRRVREL
QTRLQSVQATGPSSPGRLTSTNRPINPSTGELSTSSSSNDIPIAKIAERVKLSKTRSESSSSDRPVLGSE
ISSIGVSSVAEHLAHLQDCSNIQEIFQTLYSHGSAISESKIREFEVETERLNSRIEHLKSQNDLLTIT
LEECKSNAERMSMLVGKYESNATALRLALQYSEQCIEAYELLALAESEQSLILGQFRAAGVGSSPGDQS
GDENITQMLKRAHDCRKAENAAKALLMKLDGSCGGAFVAVAGCSVQPWESLSSNSHTSTTSSTASSCDTE
FTKEDEQRLKDYIQQLKNDRAAVKLTMLELESIHIDPLSYDVKPRGDSQRLDLENVLMQELMAMKEEMA
ELKAQLYLLEKEKKALELKLSTREAQEAYLVHIEHLKSEVEEQKEQRMRSLSSTSSGSKDKPGKECADA
ASPALSLAELRTTCSENELAAEFTNAIRREKCLKARVQELVSALERLTKSSEIRHQSAEFVNDLKRANS
NLVAAYEKAKKKHQNKLKLESQMMAMVERHETQVRMLKQRIALLEEENS RPHTNETSL

TRTRPLEQKLISEEDLAANDILDYKDDDDKV

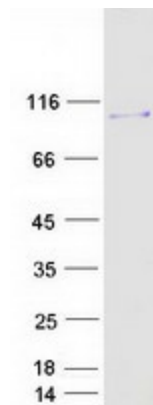
Tag:	C-Myc/DDK
Predicted MW:	92.9 kDa
Concentration:	>0.05 µg/µL as determined by microplate BCA method
Purity:	> 80% as determined by SDS-PAGE and Coomassie blue staining
Buffer:	25 mM Tris-HCl, 100 mM glycine, pH 7.3, 10% glycerol
Preparation:	Recombinant protein was captured through anti-DDK affinity column followed by conventional chromatography steps.



[View online »](#)

Note:	For testing in cell culture applications, please filter before use. Note that you may experience some loss of protein during the filtration process.
Storage:	Store at -80°C.
Stability:	Stable for 12 months from the date of receipt of the product under proper storage and handling conditions. Avoid repeated freeze-thaw cycles.
RefSeq:	NP_002378
Locus ID:	4163
UniProt ID:	P23508
RefSeq Size:	8223
Cytogenetics:	5q22.2
RefSeq ORF:	2487
Synonyms:	MCC1
Summary:	This gene is a candidate colorectal tumor suppressor gene that is thought to negatively regulate cell cycle progression. The orthologous gene in the mouse expresses a phosphoprotein associated with the plasma membrane and membrane organelles, and overexpression of the mouse protein inhibits entry into S phase. Multiple transcript variants encoding different isoforms have been found for this gene. [provided by RefSeq, Jul 2008]
Protein Families:	Druggable Genome

Product images:



Coomassie blue staining of purified MCC protein (Cat# [TP302890]). The protein was produced from HEK293T cells transfected with MCC cDNA clone (Cat# [RC202890]) using MegaTran 2.0 (Cat# [TT210002]).