

Product datasheet for **TP302884M**

TSSC3 (PHLDA2) (NM_003311) Human Recombinant Protein

Product data:

Product Type:	Recombinant Proteins
Description:	Recombinant protein of human pleckstrin homology-like domain, family A, member 2 (PHLDA2), 100 µg
Species:	Human
Expression Host:	HEK293T
Expression cDNA Clone or AA Sequence:	>RC202884 protein sequence Red =Cloning site Green =Tags(s)
	 MKSPDEVLRERGELEKRSDSLFQLWKKKRGVLTSDRLSLFPASPRARPKELRFHSILKVDCVERTGKYVYF TIVTTDHKEIDFRGAGESCWNAALALIDFQNRRLQDFRSRQERTAPAAPAEAVAAAAAAPSESEP SRPSPQPKP RTP TRTRPLEQKLISEEDLAANDILDYKDDDDKV
Tag:	C-Myc/DDK
Predicted MW:	16.9 kDa
Concentration:	>0.05 µg/µL as determined by microplate BCA method
Purity:	> 80% as determined by SDS-PAGE and Coomassie blue staining
Buffer:	25 mM Tris-HCl, 100 mM glycine, pH 7.3, 10% glycerol
Preparation:	Recombinant protein was captured through anti-DDK affinity column followed by conventional chromatography steps.
Note:	For testing in cell culture applications, please filter before use. Note that you may experience some loss of protein during the filtration process.
Storage:	Store at -80°C.
Stability:	Stable for 12 months from the date of receipt of the product under proper storage and handling conditions. Avoid repeated freeze-thaw cycles.
RefSeq:	<u>NP_003302</u>
Locus ID:	7262
UniProt ID:	<u>Q53GA4</u>



[View online »](#)

RefSeq Size: 937

Cytogenetics: 11p15.4

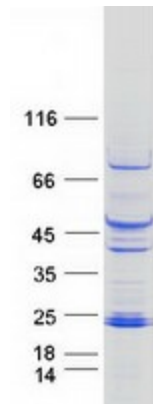
RefSeq ORF: 456

Synonyms: BRW1C; BWR1C; HLDA2; IPL; TSSC3

Summary: This gene is located in a cluster of imprinted genes on chromosome 11p15.5, which is considered to be an important tumor suppressor gene region. Alterations in this region may be associated with the Beckwith-Wiedemann syndrome, Wilms tumor, rhabdomyosarcoma, adrenocortical carcinoma, and lung, ovarian, and breast cancer. This gene has been shown to be imprinted, with preferential expression from the maternal allele in placenta and liver. [provided by RefSeq, Oct 2010]

Protein Families: Druggable Genome

Product images:



Coomassie blue staining of purified PHLDA2 protein (Cat# [TP302884]). The protein was produced from HEK293T cells transfected with PHLDA2 cDNA clone (Cat# [RC202884]) using MegaTran 2.0 (Cat# [TT210002]).