

## Product datasheet for TP302858L

### p60 CAF1 (CHAF1B) (NM\_005441) Human Recombinant Protein

#### Product data:

Product Type:	Recombinant Proteins
Description:	Recombinant protein of human chromatin assembly factor 1, subunit B (p60) (CHAF1B), 1 mg
Species:	Human
Expression Host:	HEK293T
Expression cDNA Clone or AA Sequence:	>RC202858 protein sequence Red=Cloning site Green=Tags(s)

MKVITCEIAWHNKEPVYSLDFQHGTAGRIHRLASAGVDTNVRWVKEKGPDPGKAIVEFLSNLARHTKAVN  
VVRFSPTGEILASGGDDAVILLWKVNDNKEPEQIAFQDEDEAQLNKENWTVVKTLRGHLEDVYDICWATD  
GNLMASASVDNTAIWVSKGQKISIFNEHKSIVQGVTDPLGQYVATLSCDRVLRVYSIQKKRVAFNVS  
KMLSGIGAEGEARSYRMFHDDSMKSFRRLSFTPDGSLLLTPAGCVESGENVMNTTYVFSRKNLKRPIAH  
LPCPGKATLAVRCCPVYFELRPVVETGVELMSLPYRLVFAVASEDSVLLYDTQQSFPGYVSNIIHYHTLS  
DISWSSDGAFLAISSTDGYCSFVTFEKDELGIPLKEKPVLMRTPDTAKKTKSQTHRGSSPGPRPVEGTP  
ASRTQDPSSPGTTPPQARQAPAPTIVRDPSPITPAVKSPPLPGPSEEKTLQPSQNTKAHPSRRVTLNLTQ  
AWSKTPRRINLTPLKTDTPSSVPTSVISTPSTEEIQSETPGDAQGSPPELKRPRLDENKGGTESLDP

TRTRPLEQKLISEEDLAANDILDYKDDDDKV

Tag:	C-Myc/DDK
Predicted MW:	61.3 kDa
Concentration:	>0.05 µg/µL as determined by microplate BCA method
Purity:	> 80% as determined by SDS-PAGE and Coomassie blue staining
Buffer:	25 mM Tris-HCl, 100 mM glycine, pH 7.3, 10% glycerol
Preparation:	Recombinant protein was captured through anti-DDK affinity column followed by conventional chromatography steps.
Note:	For testing in cell culture applications, please filter before use. Note that you may experience some loss of protein during the filtration process.
Storage:	Store at -80°C.
Stability:	Stable for 12 months from the date of receipt of the product under proper storage and handling conditions. Avoid repeated freeze-thaw cycles.



[View online »](#)

RefSeq: [NP\\_005432](#)

Locus ID: 8208

UniProt ID: [Q13112](#)

RefSeq Size: 2297

Cytogenetics: 21q22.12-q22.13

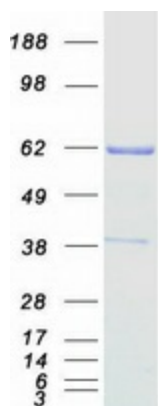
RefSeq ORF: 1677

Synonyms: CAF-1; CAF-IP60; CAF1; CAF1A; CAF1P60; MPHOSPH7; MPP7

**Summary:** Chromatin assembly factor I (CAF-I) is required for the assembly of histone octamers onto newly-replicated DNA. CAF-I is composed of three protein subunits, p50, p60, and p150. The protein encoded by this gene corresponds to the p60 subunit and is required for chromatin assembly after replication. The encoded protein is differentially phosphorylated in a cell cycle-dependent manner. In addition, it is normally found in the nucleus except during mitosis, when it is released into the cytoplasm. This protein is a member of the WD-repeat HIR1 family and may also be involved in DNA repair. [provided by RefSeq, Jul 2008]

**Protein Families:** Druggable Genome, Transcription Factors

### Product images:



Coomassie blue staining of purified CHAF1B protein (Cat# [TP302858]). The protein was produced from HEK293T cells transfected with CHAF1B cDNA clone (Cat# [RC202858]) using MegaTran 2.0 (Cat# [TT210002]).