

Product datasheet for TP302845M

THG1L (NM_017872) Human Recombinant Protein

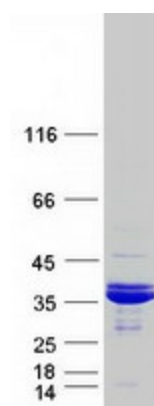
Product data:

Product Type:	Recombinant Proteins
Description:	Recombinant protein of human tRNA-histidine guanylyltransferase 1-like (<i>S. cerevisiae</i>) (THG1L), 100 µg
Species:	Human
Expression Host:	HEK293T
Expression cDNA Clone or AA Sequence:	>RC202845 protein sequence Red =Cloning site Green =Tags(s) MWGACKVKVHDSLATISITLRRYLRLGATMAKSKFEYVRDFEADDTCLAHCWVVRLDGRNFHRFAEKHN FAKPNDSRALQLMTKCAQTVMELEDIVIAYGQSDEYSFVFKRKTNWFKRRASKFMTHVASQFASSYVFY WRDYFEDQPLLYPPGFDGRVVYPSNQTLKDYLSWRQADCHINNLYNTVFWALIQQSGLTPVQAQGRLL QG TLAADKNEILFSEFNINYNNPEPPMYRKGTVLIWQKVDEVMTKEIKLPTEMEGKKMAVTRTRTKPVPLHCD IIGDAFWKEHPEILDEDS TR TRPLEQKLISEEDLAANDILDYKDDDDKV
Tag:	C-Myc/DDK
Predicted MW:	34.7 kDa
Concentration:	>0.05 µg/µL as determined by microplate BCA method
Purity:	> 80% as determined by SDS-PAGE and Coomassie blue staining
Buffer:	25 mM Tris-HCl, 100 mM glycine, pH 7.3, 10% glycerol
Preparation:	Recombinant protein was captured through anti-DDK affinity column followed by conventional chromatography steps.
Note:	For testing in cell culture applications, please filter before use. Note that you may experience some loss of protein during the filtration process.
Storage:	Store at -80°C.
Stability:	Stable for 12 months from the date of receipt of the product under proper storage and handling conditions. Avoid repeated freeze-thaw cycles.
RefSeq:	<u>NP_060342</u>


[View online »](#)

Locus ID:	54974
UniProt ID:	Q9NWX6
RefSeq Size:	1320
Cytogenetics:	5q33.3
RefSeq ORF:	894
Synonyms:	hTHG1; ICF45; IHG-1; IHG1; SCAR28; THG1
Summary:	The protein encoded by this gene is a mitochondrial protein that is induced by high levels of glucose and is associated with diabetic nephropathy. The encoded protein appears to increase mitochondrial biogenesis, which could lead to renal fibrosis. Another function of this protein is that of a guanylttransferase, adding GMP to the 5' end of tRNA(His). Several transcript variants encoding different isoforms have been found for this gene. [provided by RefSeq, Dec 2015]

Product images:



Coomassie blue staining of purified THG1L protein (Cat# [TP302845]). The protein was produced from HEK293T cells transfected with THG1L cDNA clone (Cat# [RC202845]) using MegaTran 2.0 (Cat# [TT210002]).