

## Product datasheet for **TP302835L**

### PLCXD1 (NM\_018390) Human Recombinant Protein

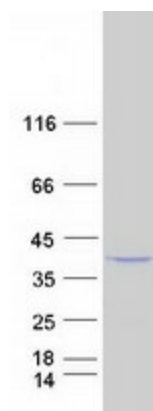
#### Product data:

Product Type:	Recombinant Proteins
Description:	Recombinant protein of human phosphatidylinositol-specific phospholipase C, X domain containing 1 (PLCXD1), 1 mg
Species:	Human
Expression Host:	HEK293T
Expression cDNA Clone or AA Sequence:	>RC202835 protein sequence <span style="color: red;">Red</span> =Cloning site <span style="color: green;">Green</span> =Tags(s)  MGGQVSASNSFSRLHCRNANEDWMSALCPRLWDVPLHHLSIPGSHDTMTYCLNKKSPISHEESRLLQLL N KALPCITRPVWLKWSVTQALDVTEQLDAGVRYLDLRIAHMLEGSEKNLHFVHMVYTTALVEDTLTEISEW LERHPREVILACRNFEGLSEDLHEYLVACIKNIFGDMLCPRGEVPTLRQLWSRGQQVIVSYEDESSLRR HHELWPGVPYWWGNRVKTEALIRYLETMKSCGRPGGLFVAGINLTENLQYVLAHPSESLEKMTLPNLPRL SAWVREQCPGPGSRCTNIIAGDFIGADGFVSDVIALNQKLLWC  <span style="color: red;">TR</span> <span style="color: green;">TRPLEQKLISEEDLAANDILDYKDDDDKV</span>
Tag:	C-Myc/DDK
Predicted MW:	36.5 kDa
Concentration:	>0.05 µg/µL as determined by microplate BCA method
Purity:	> 80% as determined by SDS-PAGE and Coomassie blue staining
Buffer:	25 mM Tris-HCl, 100 mM glycine, pH 7.3, 10% glycerol
Preparation:	Recombinant protein was captured through anti-DDK affinity column followed by conventional chromatography steps.
Note:	For testing in cell culture applications, please filter before use. Note that you may experience some loss of protein during the filtration process.
Storage:	Store at -80°C.
Stability:	Stable for 12 months from the date of receipt of the product under proper storage and handling conditions. Avoid repeated freeze-thaw cycles.
RefSeq:	<u><a href="#">NP_060860</a></u>


[View online »](#)

Locus ID:	55344
UniProt ID:	<a href="#">Q9NUJ7</a>
RefSeq Size:	5320
Cytogenetics:	X;Y
RefSeq ORF:	969
Synonyms:	LLOXNC01-136G2.1
Summary:	This gene is the most terminal protein-coding gene in the pseudoautosomal (PAR) region on chromosomes X and Y. Alternate splicing results in multiple transcript variants. [provided by RefSeq, Mar 2010]

## Product images:



Coomassie blue staining of purified PLCXD1 protein (Cat# [TP302835]). The protein was produced from HEK293T cells transfected with PLCXD1 cDNA clone (Cat# [RC202835]) using MegaTran 2.0 (Cat# [TT210002]).