

Product datasheet for **TP302826L**

UBC6e (UBE2J1) (NM_016021) Human Recombinant Protein

Product data:

Product Type:	Recombinant Proteins
Description:	Recombinant protein of human ubiquitin-conjugating enzyme E2, J1 (UBC6 homolog, yeast) (UBE2J1), 1 mg
Species:	Human
Expression Host:	HEK293T
Expression cDNA Clone or AA Sequence:	>RC202826 representing NM_016021 Red =Cloning site Green =Tags(s)

METRYNLKSPAVKRLMKEAAELKDPTDHYHAQPLEDNLFWEWHFTVRGPPDSDFDGGVYHGRIVLPPEYPM
KPPSIILLTANGRFEVGGKICLSISGHPETWQPSWSIRTALLAIIGFMPTKGEGAIGSLDYTPPEERRAL
AKKSQDFCCEGCGSAMKDVLLPLKSGSDSSQADQEAKELARQISFKAENVSSGKTISESDLNHSFSLTDL
QDDIPTTFQGATASTSYGVQNSSAASFHQPTQPVAKNNTSMSRQRRRAQQQSQRRLSTSPDVIQGHQPRDN
HTDHGGS AVLIVILTLALAALIFRRIYLANEYIFDFEL

TRTRPLEQKLISEEDLAANDILDYKDDDDKV

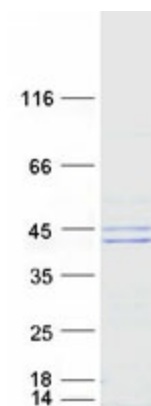
Tag:	C-Myc/DDK
Predicted MW:	35 kDa
Concentration:	>0.05 µg/µL as determined by microplate BCA method
Purity:	> 80% as determined by SDS-PAGE and Coomassie blue staining
Buffer:	25 mM Tris-HCl, 100 mM glycine, pH 7.3, 10% glycerol
Preparation:	Recombinant protein was captured through anti-DDK affinity column followed by conventional chromatography steps.
Note:	For testing in cell culture applications, please filter before use. Note that you may experience some loss of protein during the filtration process.
Storage:	Store at -80°C.
Stability:	Stable for 12 months from the date of receipt of the product under proper storage and handling conditions. Avoid repeated freeze-thaw cycles.
RefSeq:	NP_057105
Locus ID:	51465



[View online »](#)

UniProt ID:	Q9Y385
RefSeq Size:	4360
Cytogenetics:	6q15
RefSeq ORF:	954
Synonyms:	CGI-76; HSPC153; HSPC205; HSU93243; NCUBE-1; NCUBE1; UBC6; UBC6E; Ubc6p
Summary:	The modification of proteins with ubiquitin is an important cellular mechanism for targeting abnormal or short-lived proteins for degradation. Ubiquitination involves at least three classes of enzymes: ubiquitin-activating enzymes, or E1s, ubiquitin-conjugating enzymes, or E2s, and ubiquitin-protein ligases, or E3s. This gene encodes a member of the E2 ubiquitin-conjugating enzyme family. This enzyme is located in the membrane of the endoplasmic reticulum (ER) and may contribute to quality control ER-associated degradation by the ubiquitin-proteasome system. [provided by RefSeq, Jul 2008]
Protein Families:	Transmembrane
Protein Pathways:	Parkinson's disease, Ubiquitin mediated proteolysis

Product images:



Coomassie blue staining of purified UBE2J1 protein (Cat# [TP302826]). The protein was produced from HEK293T cells transfected with UBE2J1 cDNA clone (Cat# [RC202826]) using MegaTran 2.0 (Cat# [TT210002]).