

## Product datasheet for **TP302802L**

### Serum Amyloid P (APCS) (NM\_001639) Human Recombinant Protein

#### Product data:

Product Type:	Recombinant Proteins
Description:	Recombinant protein of human amyloid P component, serum (APCS), 1 mg
Species:	Human
Expression Host:	HEK293T
Expression cDNA Clone or AA Sequence:	>RC202802 protein sequence <b>Red</b> =Cloning site <b>Green</b> =Tags(s)
	 MNKPLLWISVLTSLEAFAHTDLGKVFVFPRESVTDHVNLTIPLEKPLQNFTLCFRAYSDSLRAYSLFS YNTQGRDNELLVYKERVGEYSLYIGRHKVTSKVIKFPAPVHICVSWESSGIAEFWINGTPLVKKGLRQ GYFVEAQPKIVLGQEQDSYGGKFDRSQSFVGEIGDLYMWDSVLPENILSAYQGTPLPANILDWQALNYY IRGYVIKPLVWV  <b>TRTRPLEQKLISEEDLAANDILDYKDDDDKV</b>
Tag:	C-Myc/DDK
Predicted MW:	23.2 kDa
Concentration:	>0.05 µg/µL as determined by microplate BCA method
Purity:	> 80% as determined by SDS-PAGE and Coomassie blue staining
Buffer:	25 mM Tris-HCl, 100 mM glycine, pH 7.3, 10% glycerol
Preparation:	Recombinant protein was captured through anti-DDK affinity column followed by conventional chromatography steps.
Note:	For testing in cell culture applications, please filter before use. Note that you may experience some loss of protein during the filtration process.
Storage:	Store at -80°C.
Stability:	Stable for 12 months from the date of receipt of the product under proper storage and handling conditions. Avoid repeated freeze-thaw cycles.
RefSeq:	<a href="#">NP_001630</a>
Locus ID:	325
UniProt ID:	<a href="#">P02743</a> , <a href="#">V9HWPO</a>



[View online »](#)

RefSeq Size: 960

Cytogenetics: 1q23.2

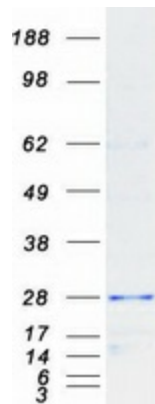
RefSeq ORF: 669

Synonyms: HEL-S-92n; PTX2; SAP

**Summary:** The protein encoded by this gene is a glycoprotein, belonging to the pentraxin family of proteins, which has a characteristic pentameric organization. These family members have considerable sequence homology which is thought to be the result of gene duplication. The binding of the encoded protein to proteins in the pathological amyloid cross-beta fold suggests its possible role as a chaperone. This protein is also thought to control the degradation of chromatin. It has been demonstrated that this protein binds to apoptotic cells at an early stage, which raises the possibility that it is involved in dealing with apoptotic cells in vivo. [provided by RefSeq, Sep 2008]

**Protein Families:** Druggable Genome, Secreted Protein

### Product images:



Coomassie blue staining of purified APCS protein (Cat# [TP302802]). The protein was produced from HEK293T cells transfected with APCS cDNA clone (Cat# [RC202802]) using MegaTran 2.0 (Cat# [TT210002]).