

Product datasheet for **TP302779M**

EFCAB2 (NM_032328) Human Recombinant Protein

Product data:

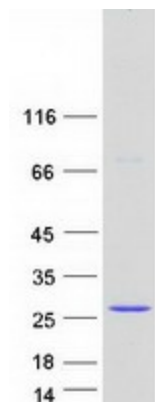
| | |
|---------------------------------------|--|
| Product Type: | Recombinant Proteins |
| Description: | Recombinant protein of human EF-hand calcium binding domain 2 (EFCAB2), transcript variant 1, 100 µg |
| Species: | Human |
| Expression Host: | HEK293T |
| Expression cDNA Clone or AA Sequence: | >RC202779 protein sequence Red =Cloning site Green =Tags(s) |
| | MADEKDREEIIIVAEFHKKIKEAFEVFDHESNNTVDVREIGTIIRSLGCCPTEGELHDLIAEVEEEEPTGY IRFEKFLPVMTEILLERKYRPIPEDVLLRAFEVLDSAKRGFLT KDELIKYMTEEGEPFSQEEMEEMLSAA IDPESNSINYKDYITMMVIDEN |
| | TR TRPLEQKLISEEDLAANDILDYKDDDDKV |
| Tag: | C-Myc/DDK |
| Predicted MW: | 18.7 kDa |
| Concentration: | >0.05 µg/µL as determined by microplate BCA method |
| Purity: | > 80% as determined by SDS-PAGE and Coomassie blue staining |
| Buffer: | 25 mM Tris-HCl, 100 mM glycine, pH 7.3, 10% glycerol |
| Preparation: | Recombinant protein was captured through anti-DDK affinity column followed by conventional chromatography steps. |
| Note: | For testing in cell culture applications, please filter before use. Note that you may experience some loss of protein during the filtration process. |
| Storage: | Store at -80°C. |
| Stability: | Stable for 12 months from the date of receipt of the product under proper storage and handling conditions. Avoid repeated freeze-thaw cycles. |
| RefSeq: | <u>NP_115704</u> |
| Locus ID: | 84288 |
| UniProt ID: | <u>Q5VUJ9</u> |



[View online »](#)

| | |
|---------------|--|
| RefSeq Size: | 1240 |
| Cytogenetics: | 1q44 |
| RefSeq ORF: | 486 |
| Synonyms: | CFAP200; DRC8 |
| Summary: | The gene encodes a protein that contains two EF-hand calcium-binding domains although its function has yet to be determined. Alternatively spliced transcripts have been observed. [provided by RefSeq, Mar 2014] |

Product images:



Coomassie blue staining of purified EFCAB2 protein (Cat# [TP302779]). The protein was produced from HEK293T cells transfected with EFCAB2 cDNA clone (Cat# [RC202779]) using MegaTran 2.0 (Cat# [TT210002]).