

Product datasheet for **TP302773L**

PSP (REG1A) (NM_002909) Human Recombinant Protein

Product data:

Product Type:	Recombinant Proteins
Description:	Recombinant protein of human regenerating islet-derived 1 alpha (REG1A), 1 mg
Species:	Human
Expression Host:	HEK293T
Expression cDNA Clone or AA Sequence:	>RC202773 protein sequence Red =Cloning site Green =Tags(s)
	MAQTSSYFMLISCLMFLSQSQGQEAQTELPQARISCEPQGNAYRSYCYFNFEDRETWVDADLYCQNMNSG NLVSVLTQAEGAFVASLIKESGTDDFNVWIGLHDPKKNRRWHWSSGSLVSYKSWGIGAPSSVNPGYCVSL TSSTGFQKWKDVPCEDKFSFVCKFKN
	TRTRPLEQKLISEEDLAANDILDYKDDDDKV
Tag:	C-Myc/DDK
Predicted MW:	16.2 kDa
Concentration:	>0.05 µg/µL as determined by microplate BCA method
Purity:	> 80% as determined by SDS-PAGE and Coomassie blue staining
Buffer:	25 mM Tris-HCl, 100 mM glycine, pH 7.3, 10% glycerol
Preparation:	Recombinant protein was captured through anti-DDK affinity column followed by conventional chromatography steps.
Note:	For testing in cell culture applications, please filter before use. Note that you may experience some loss of protein during the filtration process.
Storage:	Store at -80°C.
Stability:	Stable for 12 months from the date of receipt of the product under proper storage and handling conditions. Avoid repeated freeze-thaw cycles.
RefSeq:	<u>NP_002900</u>
Locus ID:	5967
UniProt ID:	<u>P05451</u> , <u>A8K7G6</u>
RefSeq Size:	821



[View online »](#)

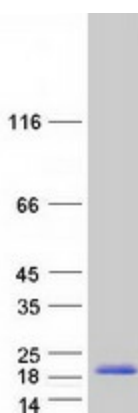
Cytogenetics: 2p12

RefSeq ORF: 498

Synonyms: ICRF; P19; PSP; PSPS; PSPS1; PTP; REG

Summary: This gene is a type I subclass member of the Reg gene family. The Reg gene family is a multigene family grouped into four subclasses, types I, II, III and IV, based on the primary structures of the encoded proteins. This gene encodes a protein that is secreted by the exocrine pancreas. It is associated with islet cell regeneration and diabetogenesis and may be involved in pancreatic lithogenesis. Reg family members REG1B, REGL, PAP and this gene are tandemly clustered on chromosome 2p12 and may have arisen from the same ancestral gene by gene duplication. [provided by RefSeq, Jul 2008]

Product images:



Coomassie blue staining of purified REG1A protein (Cat# [TP302773]). The protein was produced from HEK293T cells transfected with REG1A cDNA clone (Cat# [RC202773]) using MegaTran 2.0 (Cat# [TT210002]).