

## Product datasheet for **TP302773**

### PSP (REG1A) (NM\_002909) Human Recombinant Protein

#### Product data:

**Product Type:** Recombinant Proteins

**Description:** Recombinant protein of human regenerating islet-derived 1 alpha (REG1A), 20 µg

**Species:** Human

**Expression Host:** HEK293T

**Expression cDNA Clone or AA Sequence:** >RC202773 protein sequence  
**Red**=Cloning site **Green**=Tags(s)

MAQTSSYFMLISCLMFLSQSQGQEAQTELPQARISCPEGTNAYRSYCYFNFEDRETWVDADLYCQNMNSG  
NLVSVLTQAEGAFVASLIKESGTDDFNVWIGLHDPKKNRRWHWSSGSLVSYKSWGIGAPSSVNPGYCVSL  
TSSTGFQKWKDVPCEDKFSFVCKFKN

**TRTRPLEQKLISEEDLAANDILDYKDDDDKV**

**Tag:** C-Myc/DDK

**Predicted MW:** 16.2 kDa

**Concentration:** >0.05 µg/µL as determined by microplate BCA method

**Purity:** > 80% as determined by SDS-PAGE and Coomassie blue staining

**Buffer:** 25 mM Tris-HCl, 100 mM glycine, pH 7.3, 10% glycerol

**Preparation:** Recombinant protein was captured through anti-DDK affinity column followed by conventional chromatography steps.

**Note:** For testing in cell culture applications, please filter before use. Note that you may experience some loss of protein during the filtration process.

**Storage:** Store at -80°C.

**Stability:** Stable for 12 months from the date of receipt of the product under proper storage and handling conditions. Avoid repeated freeze-thaw cycles.

**RefSeq:** [NP\\_002900](#)

**Locus ID:** 5967

**UniProt ID:** [P05451](#), [A8K7G6](#)

**RefSeq Size:** 821



[View online »](#)

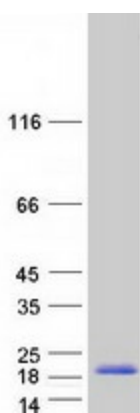
Cytogenetics: 2p12

RefSeq ORF: 498

Synonyms: ICRF; P19; PSP; PSPS; PSPS1; PTP; REG

**Summary:** This gene is a type I subclass member of the Reg gene family. The Reg gene family is a multigene family grouped into four subclasses, types I, II, III and IV, based on the primary structures of the encoded proteins. This gene encodes a protein that is secreted by the exocrine pancreas. It is associated with islet cell regeneration and diabetogenesis and may be involved in pancreatic lithogenesis. Reg family members REG1B, REGL, PAP and this gene are tandemly clustered on chromosome 2p12 and may have arisen from the same ancestral gene by gene duplication. [provided by RefSeq, Jul 2008]

### Product images:



Coomassie blue staining of purified REG1A protein (Cat# TP302773). The protein was produced from HEK293T cells transfected with REG1A cDNA clone (Cat# [RC202773]) using MegaTran 2.0 (Cat# [TT210002]).