

## Product datasheet for **TP302768L**

### DNAL1 (NM\_031427) Human Recombinant Protein

#### Product data:

Product Type:	Recombinant Proteins
Description:	Recombinant protein of human dynein, axonemal, light chain 1 (DNAL1), 1 mg
Species:	Human
Expression Host:	HEK293T
Expression cDNA Clone or AA Sequence:	>RC202768 protein sequence <b>Red</b> =Cloning site <b>Green</b> =Tags(s)
	MDASLSMLANCEKLSLSTNCIEKIANLNGLKLNLRILSLGRNNIKNLNGLEAVGDTLEELWISYNFIEKLG GIHIMKKLKILYMSNNLVKDWAEFVKLAELPCLEDLVFVGNPLEEKHSAENNWIEEATKRVPKLLKLDGT PVIKGDEEEDN
	<b>TRTRPLEQKLISEEDLAANDILDYKDDDDKV</b>
Tag:	C-Myc/DDK
Predicted MW:	21.4 kDa
Concentration:	>0.05 µg/µL as determined by microplate BCA method
Purity:	> 80% as determined by SDS-PAGE and Coomassie blue staining
Buffer:	25 mM Tris-HCl, 100 mM glycine, pH 7.3, 10% glycerol
Preparation:	Recombinant protein was captured through anti-DDK affinity column followed by conventional chromatography steps.
Note:	For testing in cell culture applications, please filter before use. Note that you may experience some loss of protein during the filtration process.
Storage:	Store at -80°C.
Stability:	Stable for 12 months from the date of receipt of the product under proper storage and handling conditions. Avoid repeated freeze-thaw cycles.
RefSeq:	<u><a href="#">NP_113615</a></u>
Locus ID:	83544
UniProt ID:	<u><a href="#">Q4LDG9</a></u>
RefSeq Size:	8538



[View online »](#)

Cytogenetics: 14q24.3

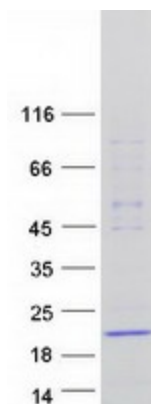
RefSeq ORF: 453

Synonyms: C14orf168; CILD16; LC1

**Summary:** This gene encodes an axonemal dynein light chain which functions as a component of the outer dynein arms complex. This complex acts as the molecular motor that provides the force to move cilia in an ATP-dependent manner. The encoded protein is expressed in tissues with motile cilia or flagella and may be involved in the movement of sperm flagella. Alternate splicing results in multiple transcript variants.[provided by RefSeq, Jan 2011]

**Protein Pathways:** Huntington's disease

### Product images:



Coomassie blue staining of purified DNAL1 protein (Cat# [TP302768]). The protein was produced from HEK293T cells transfected with DNAL1 cDNA clone (Cat# [RC202768]) using MegaTran 2.0 (Cat# [TT210002]).