

Product datasheet for **TP302757L**

Lumican (LUM) (NM_002345) Human Recombinant Protein

Product data:

Product Type:	Recombinant Proteins
Description:	Recombinant protein of human lumican (LUM), 1 mg
Species:	Human
Expression Host:	HEK293T
Expression cDNA Clone or AA Sequence:	>RC202757 protein sequence Red=Cloning site Green=Tags(s)

MSLSAFTLFLALIGGTSGQYYDYDFPLSIYGQSSPNCAPPECNCPESYPSAMYCDELKLSVPMVPPGIKY
LYLRNNQIDHIDEKAFENVTDLQWLILDHNLLENSKIKGRVFSKQKQKLLHINHNLTESVGPLPKSLE
DLQLTHNKITKLGSEGLVNLTFIHLQHNRLKEDAVSAAFGLKSLEYLDLSFNQIARLPSGLPVSLTL
YLDNNKISNIPDEYFKRFNALQYLRLSHNELADSGIPGNSFNVSSLVELDLSYNKLNKIPTVNENLENY
LEVNQLEKFDIKSFCKILGPLSYSKIKHLRLDGNRISETSLPPDMYECLRVANEVTLN

TRTRPLEQKLISEEDLAANDILDYKDDDDKV

Tag:	C-Myc/DDK
Predicted MW:	36.6 kDa
Concentration:	>0.05 µg/µL as determined by microplate BCA method
Purity:	> 80% as determined by SDS-PAGE and Coomassie blue staining
Buffer:	25 mM Tris-HCl, 100 mM glycine, pH 7.3, 10% glycerol
Preparation:	Recombinant protein was captured through anti-DDK affinity column followed by conventional chromatography steps.
Note:	For testing in cell culture applications, please filter before use. Note that you may experience some loss of protein during the filtration process.
Storage:	Store at -80°C.
Stability:	Stable for 12 months from the date of receipt of the product under proper storage and handling conditions. Avoid repeated freeze-thaw cycles.
RefSeq:	NP_002336
Locus ID:	4060



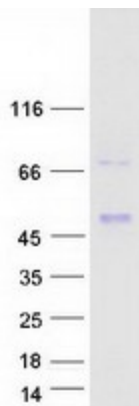
[View online »](#)

UniProt ID: [P51884](#), [A0A384N669](#)
RefSeq Size: 2116
Cytogenetics: 12q21.33
RefSeq ORF: 1014
Synonyms: LDC; SLRR2D

Summary: This gene encodes a member of the small leucine-rich proteoglycan (SLRP) family that includes decorin, biglycan, fibromodulin, keratocan, epiphycan, and osteoglycin. In these bifunctional molecules, the protein moiety binds collagen fibrils and the highly charged hydrophilic glycosaminoglycans regulate interfibrillar spacings. Lumican is the major keratan sulfate proteoglycan of the cornea but is also distributed in interstitial collagenous matrices throughout the body. Lumican may regulate collagen fibril organization and circumferential growth, corneal transparency, and epithelial cell migration and tissue repair. [provided by RefSeq, Jul 2008]

Protein Families: Secreted Protein

Product images:



Coomassie blue staining of purified LUM protein (Cat# [TP302757]). The protein was produced from HEK293T cells transfected with LUM cDNA clone (Cat# [RC202757]) using MegaTran 2.0 (Cat# [TT210002]).