

Product datasheet for **TP302750M**

myosin light chain 1 (MYL1) (NM_079422) Human Recombinant Protein

Product data:

Product Type:	Recombinant Proteins
Description:	Recombinant protein of human myosin, light chain 1, alkali; skeletal, fast (MYL1), transcript variant 3f, 100 µg
Species:	Human
Expression Host:	HEK293T
Expression cDNA Clone or AA Sequence:	>RC202750 protein sequence Red =Cloning site Green =Tags(s)
	MSFSADQIAEFKEAFLFDRTGDSKITLSQVGDVLRALGTNPTNAEVRKVLGNPSNEELNAKKIEFEQFL PMMQAISNNKDQATYEDFVEGLRVFDKEGNGTVMGAELRHVLRVATLGEKMKEEVEALMAGQEDSNGCINY EAFVKHIMSI
	TRTRPLEQKLISEEDLAANDILDYKDDDDKV
Tag:	C-Myc/DDK
Predicted MW:	16.5 kDa
Concentration:	>0.05 µg/µL as determined by microplate BCA method
Purity:	> 80% as determined by SDS-PAGE and Coomassie blue staining
Buffer:	25 mM Tris-HCl, 100 mM glycine, pH 7.3, 10% glycerol
Preparation:	Recombinant protein was captured through anti-DDK affinity column followed by conventional chromatography steps.
Note:	For testing in cell culture applications, please filter before use. Note that you may experience some loss of protein during the filtration process.
Storage:	Store at -80°C.
Stability:	Stable for 12 months from the date of receipt of the product under proper storage and handling conditions. Avoid repeated freeze-thaw cycles.
RefSeq:	NP_524146
Locus ID:	4632
UniProt ID:	P05976



[View online »](#)

RefSeq Size: 862

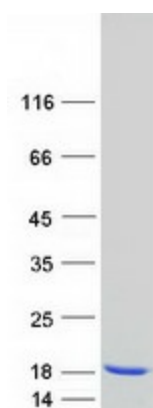
Cytogenetics: 2q34

RefSeq ORF: 450

Synonyms: MLC1F; MLC3F; MYOFTA

Summary: Myosin is a hexameric ATPase cellular motor protein. It is composed of two heavy chains, two nonphosphorylatable alkali light chains, and two phosphorylatable regulatory light chains. This gene encodes a myosin alkali light chain expressed in fast skeletal muscle. Two transcript variants have been identified for this gene. [provided by RefSeq, Jul 2008]

Product images:



Coomassie blue staining of purified MYL1 protein (Cat# [TP302750]). The protein was produced from HEK293T cells transfected with MYL1 cDNA clone (Cat# [RC202750]) using MegaTran 2.0 (Cat# [TT210002]).