

## Product datasheet for **TP302750L**

### myosin light chain 1 (MYL1) (NM\_079422) Human Recombinant Protein

#### Product data:

**Product Type:** Recombinant Proteins

**Description:** Recombinant protein of human myosin, light chain 1, alkali; skeletal, fast (MYL1), transcript variant 3f, 1 mg

**Species:** Human

**Expression Host:** HEK293T

**Expression cDNA Clone or AA Sequence:** >RC202750 protein sequence  
**Red**=Cloning site **Green**=Tags(s)

MSFSADQIAEFKEAFLFDRTGDSKITLSQVGDVLRALGTNPTNAEVRKVLGNPSNEELNAKKIEFEQFL  
PMMQAISNNKDQATYEDFVEGLRVFDKEGNGTVMGAELRHVLATLGEKMKEEVEALMAGQEDSNGCINY  
EAFVKHIMSI

**TRTRPLEQKLISEEDLAANDILDYKDDDDKV**

**Tag:** C-Myc/DDK

**Predicted MW:** 16.5 kDa

**Concentration:** >0.05 µg/µL as determined by microplate BCA method

**Purity:** > 80% as determined by SDS-PAGE and Coomassie blue staining

**Buffer:** 25 mM Tris-HCl, 100 mM glycine, pH 7.3, 10% glycerol

**Preparation:** Recombinant protein was captured through anti-DDK affinity column followed by conventional chromatography steps.

**Note:** For testing in cell culture applications, please filter before use. Note that you may experience some loss of protein during the filtration process.

**Storage:** Store at -80°C.

**Stability:** Stable for 12 months from the date of receipt of the product under proper storage and handling conditions. Avoid repeated freeze-thaw cycles.

**RefSeq:** [NP\\_524146](#)

**Locus ID:** 4632

**UniProt ID:** [P05976](#)



[View online >](#)

RefSeq Size: 862

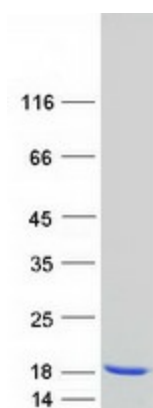
Cytogenetics: 2q34

RefSeq ORF: 450

Synonyms: MLC1F; MLC3F; MYOFTA

**Summary:** Myosin is a hexameric ATPase cellular motor protein. It is composed of two heavy chains, two nonphosphorylatable alkali light chains, and two phosphorylatable regulatory light chains. This gene encodes a myosin alkali light chain expressed in fast skeletal muscle. Two transcript variants have been identified for this gene. [provided by RefSeq, Jul 2008]

### Product images:



Coomassie blue staining of purified MYL1 protein (Cat# [TP302750]). The protein was produced from HEK293T cells transfected with MYL1 cDNA clone (Cat# [RC202750]) using MegaTran 2.0 (Cat# [TT210002]).