

Product datasheet for **TP302731M**

TXNL2 (GLRX3) (NM_006541) Human Recombinant Protein

Product data:

Product Type: Recombinant Proteins

Description: Recombinant protein of human glutaredoxin 3 (GLRX3), 100 µg

Species: Human

Expression Host: HEK293T

**Expression cDNA Clone
or AA Sequence:** >RC202731 protein sequence
Red=Cloning site **Green**=Tags(s)

MAAGAAEAAVAAVEEVGSAGQFEELLRLKAKSLLVVHFWAPWAPQCAQMNEVMAELAKELPQVSFVKLEA
EGVPEVSEKYEISSVPTFLFFKNSQKIDRLDGAHAPELTKKVQRHASSGSFLPSANEHLKEDLNLRLKKL
THAAPCMLFMKGTPQEPRCGFSKQMVEILHKHNIQFSSFDIFSDEEVRQGLKAYSSWPTYPQLYVSGELI
GGDLIIKELEASEELDTICPKAPKLEERLKVLTNKASVMLFMKGNKQEAKCGFSKQILEILNSTGVEYET
FDILEDEEVRQGLKAYSNWPTYPQLYVKGELVGGGLDIVKELKENGELLPILRGEN

TRTRPLEQLISEEDLAANDILDYKDDDDKV

Tag: C-Myc/DDK

Predicted MW: 37.3 kDa

Concentration: >0.05 µg/µL as determined by microplate BCA method

Purity: > 80% as determined by SDS-PAGE and Coomassie blue staining

Buffer: 25 mM Tris-HCl, 100 mM glycine, pH 7.3, 10% glycerol

Preparation: Recombinant protein was captured through anti-DDK affinity column followed by conventional chromatography steps.

Note: For testing in cell culture applications, please filter before use. Note that you may experience some loss of protein during the filtration process.

Storage: Store at -80°C.

Stability: Stable for 12 months from the date of receipt of the product under proper storage and handling conditions. Avoid repeated freeze-thaw cycles.

RefSeq: [NP_006532](#)

Locus ID: 10539



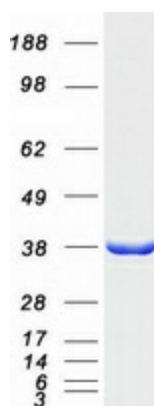
[View online »](#)

UniProt ID: [O76003](#), [A0A140VJK1](#)
RefSeq Size: 1343
Cytogenetics: 10q26.3
RefSeq ORF: 1005
Synonyms: GLRX4; GRX3; GRX4; PICOT; TXNL2; TXNL3

Summary: This gene encodes a member of the glutaredoxin family. Glutaredoxins are oxidoreductase enzymes that reduce a variety of substrates using glutathione as a cofactor. The encoded protein binds to and modulates the function of protein kinase C theta. The encoded protein may also inhibit apoptosis and play a role in cellular growth, and the expression of this gene may be a marker for cancer. Pseudogenes of this gene are located on the short arm of chromosomes 6 and 9. Alternatively spliced transcript variants have been observed for this gene. [provided by RefSeq, Dec 2010]

Protein Families: Druggable Genome

Product images:



Coomassie blue staining of purified GLRX3 protein (Cat# [TP302731]). The protein was produced from HEK293T cells transfected with GLRX3 cDNA clone (Cat# [RC202731]) using MegaTran 2.0 (Cat# [TT210002]).