

Product datasheet for TP302731

TXNL2 (GLRX3) (NM_006541) Human Recombinant Protein

Product data:

Product Type:	Recombinant Proteins
Description:	Recombinant protein of human glutaredoxin 3 (GLRX3), 20 µg
Species:	Human
Expression Host:	HEK293T
Expression cDNA Clone or AA Sequence:	>RC202731 protein sequence Red =Cloning site Green =Tags(s)

MAAGAAEAAVAAVEEVGSAGQFEELLRLKAKSLLVVHFWAPWAPQCAQMNEVMAELAKELPQVSFVKLEA
EGVPEVSEKYEISSVPTFLFFKNSQKIDRLDGAHAPELTKKVQRHASSGSFLPSANEHLKEDLNLRLKKL
THAAPCMLFMKGTPQEPRCGFSKQMVEILHKHNIQFSSFDIFSDEEVRQGLKAYSSWPTYPQLYVSGELI
GGDLIIKELEASEELDTICPKAPKLEERLKVLTNKASVMLFMKGNKQEAKCGFSKQILEILNSTGVEYET
FDILEDEEVRQGLKAYSNWPTYPQLYVKGELVGGGLDIVKELKENGELLPILRGEN

TRTRPLEQKLISEEDLAANDILDYKDDDDKV

Tag:	C-Myc/DDK
Predicted MW:	37.3 kDa
Concentration:	>0.05 µg/µL as determined by microplate BCA method
Purity:	> 80% as determined by SDS-PAGE and Coomassie blue staining
Buffer:	25 mM Tris-HCl, 100 mM glycine, pH 7.3, 10% glycerol
Preparation:	Recombinant protein was captured through anti-DDK affinity column followed by conventional chromatography steps.
Note:	For testing in cell culture applications, please filter before use. Note that you may experience some loss of protein during the filtration process.
Storage:	Store at -80°C.
Stability:	Stable for 12 months from the date of receipt of the product under proper storage and handling conditions. Avoid repeated freeze-thaw cycles.
RefSeq:	<u>NP_006532</u>
Locus ID:	10539



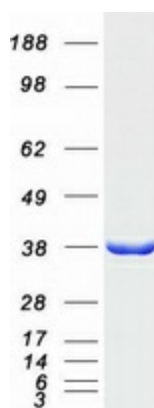
[View online »](#)

UniProt ID: [O76003](#), [A0A140VJK1](#)
RefSeq Size: 1343
Cytogenetics: 10q26.3
RefSeq ORF: 1005
Synonyms: GLRX4; GRX3; GRX4; PICOT; TXNL2; TXNL3

Summary: This gene encodes a member of the glutaredoxin family. Glutaredoxins are oxidoreductase enzymes that reduce a variety of substrates using glutathione as a cofactor. The encoded protein binds to and modulates the function of protein kinase C theta. The encoded protein may also inhibit apoptosis and play a role in cellular growth, and the expression of this gene may be a marker for cancer. Pseudogenes of this gene are located on the short arm of chromosomes 6 and 9. Alternatively spliced transcript variants have been observed for this gene. [provided by RefSeq, Dec 2010]

Protein Families: Druggable Genome

Product images:



Coomassie blue staining of purified GLRX3 protein (Cat# TP302731). The protein was produced from HEK293T cells transfected with GLRX3 cDNA clone (Cat# [RC202731]) using MegaTran 2.0 (Cat# [TT210002]).