

Product datasheet for **TP302727M**

HUS1 (NM_004507) Human Recombinant Protein

Product data:

Product Type:	Recombinant Proteins
Description:	Recombinant protein of human HUS1 checkpoint homolog (<i>S. pombe</i>) (HUS1), 100 µg
Species:	Human
Expression Host:	HEK293T
Expression cDNA Clone or AA Sequence:	>RC202727 protein sequence Red =Cloning site Green =Tags(s)
	 MKFRAKIVDGAACLNHFTRISNMIAKLAKTCTLRISPDKLNFILCDKLANGGVSMWCELEQENFFNEFQME GVSAENNEIYLELTSENLSRALKTAQNARALKIKLTNKHFPCLTVSVELLSMSSSRIVTHDIPKVIPIR KLWKDLQEPVVPDPDYSIYLPVLKTMKSVVEKMKNISNHLVIEANLDGELNLKIETELVCVTTHFKDLGN PPLASESTHEDRNVEHMAEVHIDIRKLLQFLAGQQVNPTKALCNIVNNKMVHFDLLHEDVSLQYFIPALS TRTRPLEQKLISEEDLAANDILDYKDDDDKV
Tag:	C-Myc/DDK
Predicted MW:	31.5 kDa
Concentration:	>0.05 µg/µL as determined by microplate BCA method
Purity:	> 80% as determined by SDS-PAGE and Coomassie blue staining
Buffer:	25 mM Tris-HCl, 100 mM glycine, pH 7.3, 10% glycerol
Preparation:	Recombinant protein was captured through anti-DDK affinity column followed by conventional chromatography steps.
Note:	For testing in cell culture applications, please filter before use. Note that you may experience some loss of protein during the filtration process.
Storage:	Store at -80°C.
Stability:	Stable for 12 months from the date of receipt of the product under proper storage and handling conditions. Avoid repeated freeze-thaw cycles.
RefSeq:	NP_004498
Locus ID:	3364
UniProt ID:	O60921 , A4D2F2



[View online »](#)

RefSeq Size: 3033

Cytogenetics: 7p12.3

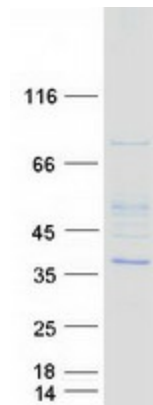
RefSeq ORF: 840

Synonyms: hHUS1

Summary: The protein encoded by this gene is a component of an evolutionarily conserved, genotoxin-activated checkpoint complex that is involved in the cell cycle arrest in response to DNA damage. This protein forms a heterotrimeric complex with checkpoint proteins RAD9 and RAD1. In response to DNA damage, the trimeric complex interacts with another protein complex consisting of checkpoint protein RAD17 and four small subunits of the replication factor C (RFC), which loads the combined complex onto the chromatin. The DNA damage induced chromatin binding has been shown to depend on the activation of the checkpoint kinase ATM, and is thought to be an early checkpoint signaling event. Alternative splicing results in multiple transcript variants. [provided by RefSeq, Feb 2011]

Protein Families: Druggable Genome

Product images:



Coomassie blue staining of purified HUS1 protein (Cat# [TP302727]). The protein was produced from HEK293T cells transfected with HUS1 cDNA clone (Cat# [RC202727]) using MegaTran 2.0 (Cat# [TT210002]).