

Product datasheet for TP302721

Creatine kinase M type (CKM) (NM_001824) Human Recombinant Protein

Product data:

Product Type:	Recombinant Proteins
Description:	Recombinant protein of human creatine kinase, muscle (CKM), 20 µg
Species:	Human
Expression Host:	HEK293T
Expression cDNA Clone or AA Sequence:	>RC202721 protein sequence Red =Cloning site Green =Tags(s)
	<p>M P F G N T H N K F K L N Y K P E E E Y P D L S K H N N H M A K V L T L E Y K K L R D K E T P S G F T V D D V I Q T G V D N P G H P F I M T V G C V A G D E E S Y E V F K E L F D P I I S D R H G G Y K P T D K H K T D L N H E N L K G G D D L P N Y V L S S R V R T G R S I K G Y T L P P H C S R G E R R A V E K L S V E A L N S L T G E F K G K Y P L K S M T E K E Q Q L I D D H F L F D K P V S P L L L A S G M A R D W P D A R G I W H N D N K S L L V W V N E E D H L R V I S M E K G G N M K E V F R R F C V G L Q K I E E I F K K A G H P F M W N Q H L G Y V L T C P S N L G T G L R G G V H V K L A H L S K H P K F E E I L T R L R L Q K R G T G G V D T A A V G S V F D V S N A D R L G S S E V E Q V Q L V D G V K L M V E M E K K L E K G Q S I D D M I P A Q K</p> <p>T R T R P L E Q K L I S E E D L A A N D I L D Y K D D D D K V</p>
Tag:	C-Myc/DDK
Predicted MW:	42.9 kDa
Concentration:	>0.05 µg/µL as determined by microplate BCA method
Purity:	> 80% as determined by SDS-PAGE and Coomassie blue staining
Buffer:	25 mM Tris-HCl, 100 mM glycine, pH 7.3, 10% glycerol
Preparation:	Recombinant protein was captured through anti-DDK affinity column followed by conventional chromatography steps.
Note:	For testing in cell culture applications, please filter before use. Note that you may experience some loss of protein during the filtration process.
Storage:	Store at -80°C.
Stability:	Stable for 12 months from the date of receipt of the product under proper storage and handling conditions. Avoid repeated freeze-thaw cycles.



[View online >](#)

RefSeq: [NP_001815](#)

Locus ID: 1158

UniProt ID: [P06732](#)

RefSeq Size: 1666

Cytogenetics: 19q13.32

RefSeq ORF: 1143

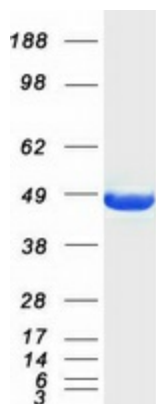
Synonyms: CKMM; CPK-M; M-CK

Summary: The protein encoded by this gene is a cytoplasmic enzyme involved in energy homeostasis and is an important serum marker for myocardial infarction. The encoded protein reversibly catalyzes the transfer of phosphate between ATP and various phosphogens such as creatine phosphate. It acts as a homodimer in striated muscle as well as in other tissues, and as a heterodimer with a similar brain isozyme in heart. The encoded protein is a member of the ATP:guanido phosphotransferase protein family. [provided by RefSeq, Jul 2008]

Protein Families: Druggable Genome

Protein Pathways: Arginine and proline metabolism, Metabolic pathways

Product images:



Coomassie blue staining of purified CKM protein (Cat# TP302721). The protein was produced from HEK293T cells transfected with CKM cDNA clone (Cat# [RC202721]) using MegaTran 2.0 (Cat# [TT210002]).