

Product datasheet for **TP302720L**

Carboxypeptidase A (CPA1) (NM_001868) Human Recombinant Protein

Product data:

Product Type: Recombinant Proteins

Description: Recombinant protein of human carboxypeptidase A1 (pancreatic) (CPA1), 1 mg

Species: Human

Expression Host: HEK293T

Expression cDNA Clone or AA Sequence: >RC202720 protein sequence
Red=Cloning site **Green**=Tags(s)

MRGLLVLSVLLGAVFGKEDFVGHQVLRISVADEAQVQKVKLEDELEHLQLDFWRGPAHPGSPIDVRVFPF
SIQAVKIFLESHGISYETMIEDVQSLLDDEEQMFAFRSRARSTDTFNYATYHTLEEIYDFLDLLVAENP
HLVSKIQIGNTYEGRPYVLKFSTGGSKRPAIWIDTGIHSREWWTQASGVWFakkITQDYGQDAAFTAIL
DTLDIFLEIVTNPDGFAFTHSTNRMWRKTRSHTAGSLCIGVDPNRNWDAGFGLSGASSNPCSETYRGKFA
NSEVEVKSIVDFVKDHGNIAFISHSYSQLLMYPYGYKTEPVPDQDELQLSKAAVTALASLYGTFKNY
GSIKAIYQASGSTIDWTYSQGIKYSFTFELRDTGRYGFLLPASQIIPTAKETWLALLTIMEHTLNHPY

TRTRPLEQKLISEEDLAANDILDYKDDDDKV

Tag: C-Myc/DDK

Predicted MW: 45.5 kDa

Concentration: >0.05 µg/µL as determined by microplate BCA method

Purity: > 80% as determined by SDS-PAGE and Coomassie blue staining

Buffer: 25 mM Tris-HCl, 100 mM glycine, pH 7.3, 10% glycerol

Preparation: Recombinant protein was captured through anti-DDK affinity column followed by conventional chromatography steps.

Note: For testing in cell culture applications, please filter before use. Note that you may experience some loss of protein during the filtration process.

Storage: Store at -80°C.

Stability: Stable for 12 months from the date of receipt of the product under proper storage and handling conditions. Avoid repeated freeze-thaw cycles.

RefSeq: [NP_001859](#)

Locus ID: 1357



[View online »](#)

UniProt ID: [P15085](#)

RefSeq Size: 1445

Cytogenetics: 7q32.2

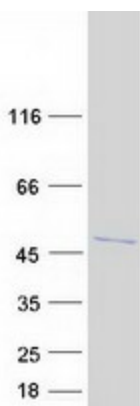
RefSeq ORF: 1257

Synonyms: CPA

Summary: This gene encodes a member of the carboxypeptidase A family of zinc metalloproteases. This enzyme is produced in the pancreas and preferentially cleaves C-terminal branched-chain and aromatic amino acids from dietary proteins. This gene and several family members are present in a gene cluster on chromosome 7. Mutations in this gene may be linked to chronic pancreatitis, while elevated protein levels may be associated with pancreatic cancer. [provided by RefSeq, Jan 2015]

Protein Families: Druggable Genome, ES Cell Differentiation/IPS, Protease, Secreted Protein

Product images:



Coomassie blue staining of purified CPA1 protein (Cat# [TP302720]). The protein was produced from HEK293T cells transfected with CPA1 cDNA clone (Cat# [RC202720]) using MegaTran 2.0 (Cat# [TT210002]).