

## Product datasheet for TP302720

### Carboxypeptidase A (CPA1) (NM\_001868) Human Recombinant Protein

#### Product data:

Product Type:	Recombinant Proteins
Description:	Recombinant protein of human carboxypeptidase A1 (pancreatic) (CPA1), 20 µg
Species:	Human
Expression Host:	HEK293T
Expression cDNA Clone or AA Sequence:	>RC202720 protein sequence <b>Red</b> =Cloning site <b>Green</b> =Tags(s)

MRGLLVLSVLLGAVFGKEDFVGHQVLRISVADEAQVQKVKLEDELEHLQLDFWRGPAHPGSPIDVRVFPF  
SIQAVKIFLESHGISYETMIEDVQSLLDDEEQMFAFRSRARSTDTFNYATYHTLEEIYDFLDLLVAENP  
HLVSKIQIGNTYEGRPYVLKFKSTGGSKRPAIWIDTGIHSREWWTQASGVWFACKITQDYGQDAAFTAIL  
DTLDIFLEIVTNPDGFAFTHSTNRMWRKTRSHTAGSLCIGVDPNPNWDAGFGLSGASSNPCSETYRGKFA  
NSEVEVKSIVDFVKDHGNIAFISIHYSQLLMYPYGYKTEPVPDQDELQLSKAAVTALASLYGTFKFN  
YSIIKAIYQASGSTIDWTYSQGIKYSFTFELRDTGRYGFLLPASQIIPTAKETWLALLTIMEHTLNHPY

**TRTRPLEQKLISEEDLAANDILDYKDDDDKV**

Tag:	C-Myc/DDK
Predicted MW:	45.5 kDa
Concentration:	>0.05 µg/µL as determined by microplate BCA method
Purity:	> 80% as determined by SDS-PAGE and Coomassie blue staining
Buffer:	25 mM Tris-HCl, 100 mM glycine, pH 7.3, 10% glycerol
Preparation:	Recombinant protein was captured through anti-DDK affinity column followed by conventional chromatography steps.
Note:	For testing in cell culture applications, please filter before use. Note that you may experience some loss of protein during the filtration process.
Storage:	Store at -80°C.
Stability:	Stable for 12 months from the date of receipt of the product under proper storage and handling conditions. Avoid repeated freeze-thaw cycles.
RefSeq:	<a href="#">NP_001859</a>
Locus ID:	1357



[View online »](#)

UniProt ID: [P15085](#)

RefSeq Size: 1445

Cytogenetics: 7q32.2

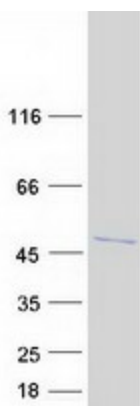
RefSeq ORF: 1257

Synonyms: CPA

**Summary:** This gene encodes a member of the carboxypeptidase A family of zinc metalloproteases. This enzyme is produced in the pancreas and preferentially cleaves C-terminal branched-chain and aromatic amino acids from dietary proteins. This gene and several family members are present in a gene cluster on chromosome 7. Mutations in this gene may be linked to chronic pancreatitis, while elevated protein levels may be associated with pancreatic cancer. [provided by RefSeq, Jan 2015]

**Protein Families:** Druggable Genome, ES Cell Differentiation/IPS, Protease, Secreted Protein

### Product images:



Coomassie blue staining of purified CPA1 protein (Cat# TP302720). The protein was produced from HEK293T cells transfected with CPA1 cDNA clone (Cat# [RC202720]) using MegaTran 2.0 (Cat# [TT210002]).