

## Product datasheet for TP302719L

### Carboxypeptidase A2 (CPA2) (NM\_001869) Human Recombinant Protein

#### Product data:

Product Type:	Recombinant Proteins
Description:	Recombinant protein of human carboxypeptidase A2 (pancreatic) (CPA2), 1 mg
Species:	Human
Expression Host:	HEK293T
Expression cDNA Clone or AA Sequence:	>RC202719 protein sequence <b>Red</b> =Cloning site <b>Green</b> =Tags(s)
	MRLILFFGALFGHIYCLETFVGDQVLEIVPSNEEQIKNLLQLEAQEHLQLDFWKSPTTPGETAHVRVPFV NVQAVKVFLGSQGIAYSIMIEDVQVLLDKENEMLFNRRRERSGNFNFGAYHTLEEISQEMDNLVAEHPG LVSKVNIGSSFENRPMNVLKFSTGGDKPAIWLDAGIHAREWVTQATALWTANKIVSDYGKDPSITSILDA LDIFLLPVTNPDGYVFSQTKNRMWRKTRSKVSGSLCVGVDPNRNWDAGFGGPGASSNPCSDSYHGPSANS EVEVKSIVDFIKSHGKVKAFITLHSYSQLLMFPYGYKCTKLDDFDELSEVAQKAAQSLRSLHGTYKVGVP ICSVIYQASGGSIDWSYDYGIKYSFAFELRDTGRYGFLLPARQILPTAETWLGLKAIMEHVRDHPY
	<b>TRTRPLEQKLISEEDLAANDILDYKDDDDKV</b>
Tag:	C-Myc/DDK
Predicted MW:	44.9 kDa
Concentration:	>0.05 µg/µL as determined by microplate BCA method
Purity:	> 80% as determined by SDS-PAGE and Coomassie blue staining
Buffer:	25 mM Tris-HCl, 100 mM glycine, pH 7.3, 10% glycerol
Preparation:	Recombinant protein was captured through anti-DDK affinity column followed by conventional chromatography steps.
Note:	For testing in cell culture applications, please filter before use. Note that you may experience some loss of protein during the filtration process.
Storage:	Store at -80°C.
Stability:	Stable for 12 months from the date of receipt of the product under proper storage and handling conditions. Avoid repeated freeze-thaw cycles.
RefSeq:	<u><a href="#">NP_001860</a></u>
Locus ID:	1358



[View online »](#)

UniProt ID: [P48052](#)

RefSeq Size: 1342

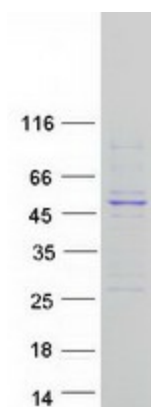
Cytogenetics: 7q32.2

RefSeq ORF: 1251

**Summary:** Three different forms of human pancreatic procarboxypeptidase A have been isolated. The encoded protein represents the A2 form, which is a monomeric protein with different biochemical properties from the A1 and A3 forms. The A2 form of pancreatic procarboxypeptidase acts on aromatic C-terminal residues and is a secreted protein. [provided by RefSeq, Dec 2008]

**Protein Families:** Druggable Genome, Protease, Secreted Protein

### Product images:



Coomassie blue staining of purified CPA2 protein (Cat# [TP302719]). The protein was produced from HEK293T cells transfected with CPA2 cDNA clone (Cat# [RC202719]) using MegaTran 2.0 (Cat# [TT210002]).